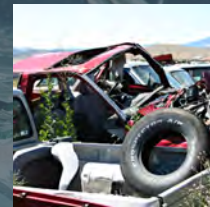




WEEKLY FATAL REPORT



OVERALL STATS



**CONFIRMED &
UNCONFIRMED
FACTORS**



**CRASHES & DEATHS
BY DISTRICT**



MONTANA HIGHWAY PATROL

Fatality Crash Information

From Jan 1, 2016 to Oct 24, 2016

	2015		2016		Percent Change	
	Crashes	Deaths	Crashes	Deaths	Crashes	Deaths
INTERSTATE	22	23	26	33	18.18%	43.48%
PRIMARY	63	71	48	51	-23.81%	-28.17%
RURAL	47	50	39	42	-17.02%	-16.00%
SECONDARY	26	31	26	26	0.00%	-16.13%
URBAN	9	10	10	10	11.11%	0.00%
Total	167	185	149	162	-10.78%	-12.43%

OVERALL ROADWAY TYPES

WEEKLY FATAL REPORT

Confirmed as of Oct 2016
Jan 1 to Jul 31

	2015		2016		Percent Change	
	Crashes	Deaths	Crashes	Deaths	Crashes	Deaths
Total For Time Period	100	108	98	106	-2.00%	-1.85%
Alcohol a Factor**	47	51	43	50	-8.51%	-1.96%
Drugs a Factor**	34	39	13	15	-61.76%	-61.54%
Speed a Factor	30	32	31	35	3.33%	9.38%
One Vehicle Crashes	76	80	76	79	0.00%	-1.25%
Seat Belts Not Used	55	61	50	52	-9.09%	-14.75%
Seat Belts Used	22	23	21	24	-4.55%	4.35%
Seat Belts Unknown*	1	2	2	5	100.00%	150.00%
Motorcycle Involved	13	13	8	8	-38.46%	-38.46%
ATV Involved	3	3	6	6	100.00%	100.00%
Helmets Used	4	4	4	4	0.00%	0.00%
Bicycle Involved	1	1	2	2	100.00%	100.00%
Pedestrian Involved	6	6	8	8	33.33%	33.33%
Commercial Vehicle Involved	8	11	10	13	25.00%	18.18%
Hazardous Materials Involved	0	0	0	0	0.00%	0.00%
Other than Dry Roads	12	12	17	20	41.67%	66.67%
Occurred During Daylight Hrs	57	65	53	54	-7.02%	-16.92%
Out-of-State Veh. Involved	19	25	13	15	-31.58%	-40.00%

* Seat Belts Unknown - The investigation is complete but belt use was unable to be determined, such as in a car fire.

** For the specific time period listed above, the alcohol and drug test results for 4 crash reports for the current year are still pending. Whereas all of the numbers for 2015 are confirmed.

CONFIRMED CRASH FACTORS



SUSPECTED CRASH FACTORS

These investigations remain ongoing. The data and contributing factors should be viewed as preliminary only and subject to change.

MONTANA HIGHWAY PATROL

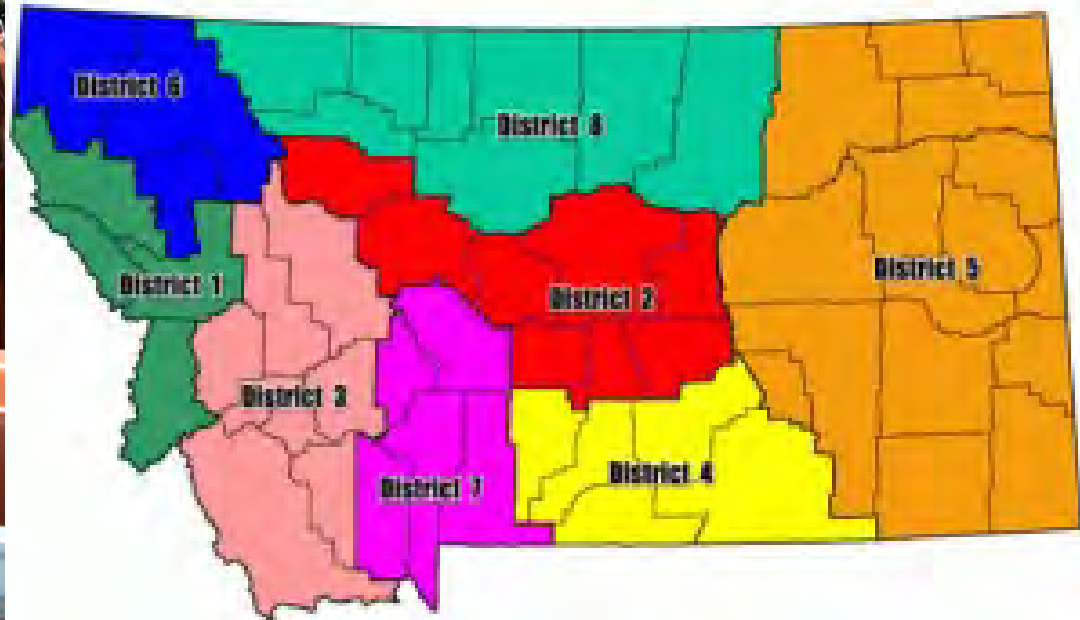
Fatality Crash Information

From Jan 1, 2016 to Oct 24, 2016

Unconfirmed and Latest Jan 1 to Oct 24	2015		2016		Percent Change	
	Crashes	Deaths	Crashes	Deaths	Crashes	Deaths
Alcohol Suspected	73	81	62	72	-15.07%	-11.11%
Drugs Suspected	58	65	21	25	-63.79%	-61.54%
Speed Suspected	50	56	53	60	6.00%	7.14%
One Vehicle Crashes	122	130	113	120	-7.38%	-7.69%
Seat Belts Not Used	88	101	77	82	-12.50%	-18.81%
Seat Belts Used	36	38	32	36	-11.11%	-5.26%
Seat Belts Unknown	2	5	5	8	150.00%	60.00%
Motorcycle Involved	21	21	17	18	-19.05%	-14.29%
ATV Involved	8	8	7	7	-12.50%	-12.50%
Helmets Used	7	7	6	6	-14.29%	-14.29%
Bicycle Involved	1	1	2	2	100.00%	100.00%
Pedestrian Involved	12	12	9	9	-25.00%	-25.00%
Commercial Vehicle Involved	14	19	19	22	35.71%	15.79%
Hazardous Materials Involved	1	1	0	0	-100.00%	-100.00%
Other than Dry Roads	17	17	24	27	41.18%	58.82%
Occurred During Daylight Hrs	94	106	85	89	-9.57%	-16.04%
Out-of-State Veh. Involved	28	35	19	22	-32.14%	-37.14%



MHP DISTRICT MAP

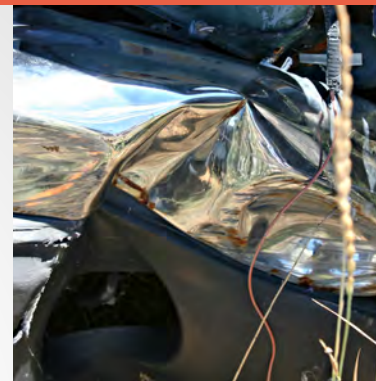


MONTANA HIGHWAY PATROL

Fatality Crash Information

From Jan 1, 2016 to Oct 24, 2016

Deaths	DISTRICT 1 - MISSOULA				DISTRICT 2 - GREAT FALLS			
Route	2014	2015	2016	Ave.	2014	2015	2016	Ave.
INTERSTATE	3	4	5	4.0	3	3	4	3.3
PRIMARY	9	13	4	8.7	5	13	8	8.7
RURAL	7	6	5	6.0	8	3	3	4.7
SECONDARY	1	2	2	1.7	3	1	1	1.7
URBAN	0	0	0	0.0	1	1	1	1.0
TOTAL	20	25	16	20.3	20	21	17	19.3
	DISTRICT 3 - BUTTE				DISTRICT 4 - BILLINGS			
INTERSTATE	11	5	6	7.3	6	5	5	5.3
PRIMARY	10	9	4	7.7	4	13	6	7.7
RURAL	1	2	7	3.3	5	8	9	7.3
SECONDARY	2	1	3	2.0	3	6	10	6.3
URBAN	0	5	1	2.0	6	2	7	5.0
TOTAL	24	22	21	22.3	24	34	37	31.7
	DISTRICT 5 - GLENDIVE				DISTRICT 6 - KALISPELL			
INTERSTATE	1	2	7	3.3	0	0	0	0.0
PRIMARY	11	11	10	10.7	7	5	12	8.0
RURAL	7	9	4	6.7	6	8	7	7.0
SECONDARY	3	1	1	1.7	2	7	4	4.3
URBAN	0	0	0	0.0	1	0	0	0.3
TOTAL	22	23	22	22.3	16	20	23	19.7
	DISTRICT 7 - BOZEMAN				DISTRICT 8 - HAVRE			
INTERSTATE	4	4	5	4.3	0	0	1	0.3
PRIMARY	13	2	5	6.7	5	5	2	4.0
RURAL	1	6	4	3.7	6	8	3	5.7
SECONDARY	3	3	1	2.3	3	10	4	5.7
URBAN	1	1	1	1.0	1	1	0	0.7
TOTAL	22	16	16	18.0	15	24	10	16.3
	ALL DISTRICTS							
INTERSTATE	28	23	33	28.0				
PRIMARY	64	71	51	62.0				
RURAL	41	50	42	44.3				
SECONDARY	20	31	26	25.7				
URBAN	10	10	10	10.0				
TOTAL	163	185	162	170.0				



FATALS BY DISTRICT

CRASHES BY DISTRICT

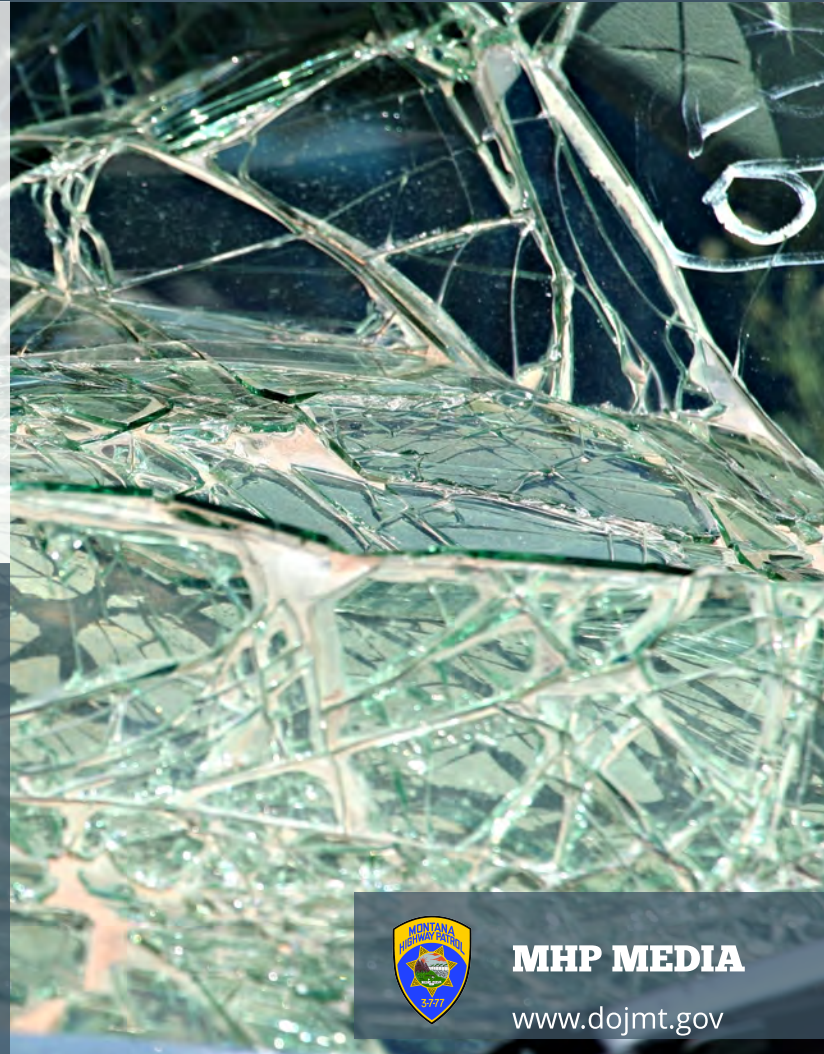


MONTANA HIGHWAY PATROL

Fatality Crash Information

From Jan 1, 2016 to Oct 24, 2016

Crashes	DISTRICT 1 - MISSOULA				DISTRICT 2 - GREAT FALLS			
Route	2014	2015	2016	AVE.	2014	2015	2016	AVE.
INTERSTATE	3	4	4	3.7	3	3	2	2.7
PRIMARY	6	13	4	7.7	5	11	7	7.7
RURAL	7	6	5	6.0	8	3	3	4.7
SECONDARY	1	2	2	1.7	3	1	1	1.7
URBAN	0	0	0	0.0	1	1	1	1.0
TOTAL	17	25	15	19.0	20	19	14	17.7
	DISTRICT 3 - BUTTE				DISTRICT 4 - BILLINGS			
INTERSTATE	10	4	5	6.3	4	5	4	4.3
PRIMARY	5	6	4	5.0	4	12	5	7.0
RURAL	1	2	7	3.3	5	7	9	7.0
SECONDARY	2	1	3	2.0	2	6	10	6.0
URBAN	0	4	1	1.7	6	2	7	5.0
TOTAL	18	17	20	18.3	21	32	35	29.3
	DISTRICT 5 - GLENDIVE				DISTRICT 6 - KALISPELL			
INTERSTATE	1	2	5	2.7	0	0	0	0.0
PRIMARY	11	9	9	9.7	7	5	12	8.0
RURAL	7	9	4	6.7	5	8	5	6.0
SECONDARY	3	1	1	1.7	2	6	4	4.0
URBAN	0	0	0	0.0	1	0	0	0.3
TOTAL	22	21	19	20.7	15	19	21	18.3
	DISTRICT 7 - BOZEMAN				DISTRICT 8 - HAVRE			
INTERSTATE	4	4	5	4.3	0	0	1	0.3
PRIMARY	12	2	5	6.3	5	5	2	4.0
RURAL	1	6	3	3.3	5	6	3	4.7
SECONDARY	3	3	1	2.3	3	6	4	4.3
URBAN	1	1	1	1.0	1	1	0	0.7
TOTAL	21	16	15	17.3	14	18	10	14.0
	ALL DISTRICTS							
INTERSTATE	25	22	26	24.3				
PRIMARY	55	63	48	55.3				
RURAL	39	47	39	41.7				
SECONDARY	19	26	26	23.7				
URBAN	10	9	10	9.7				
TOTAL	148	167	149	154.7				



MHP MEDIA

www.dojmt.gov