

Appendix A: Geologic Maps

Modified from Berg and Hargrove (2004), Berg (2005) and Derkey et al (1993).

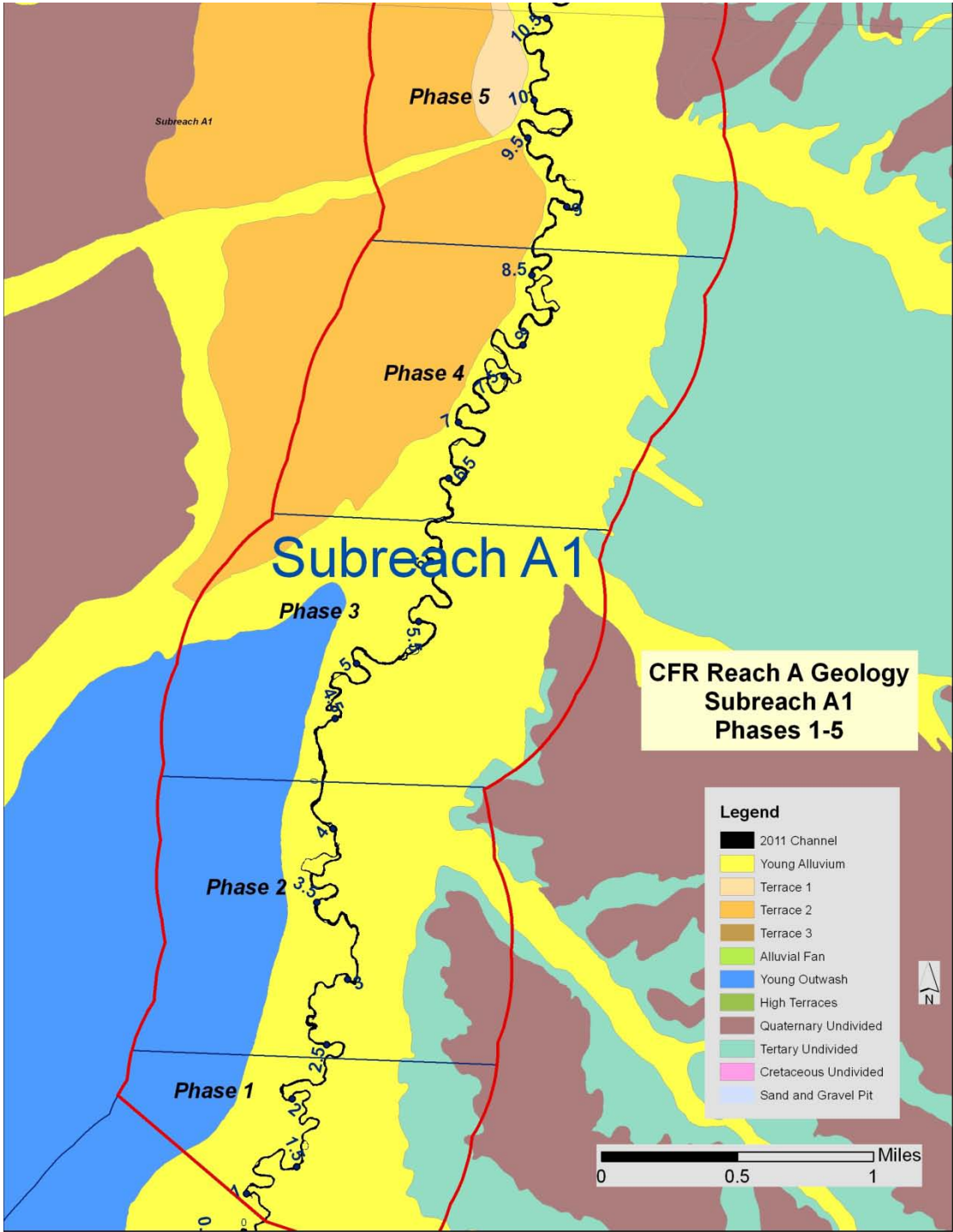


Figure A- 1. Subreach A1 Geology

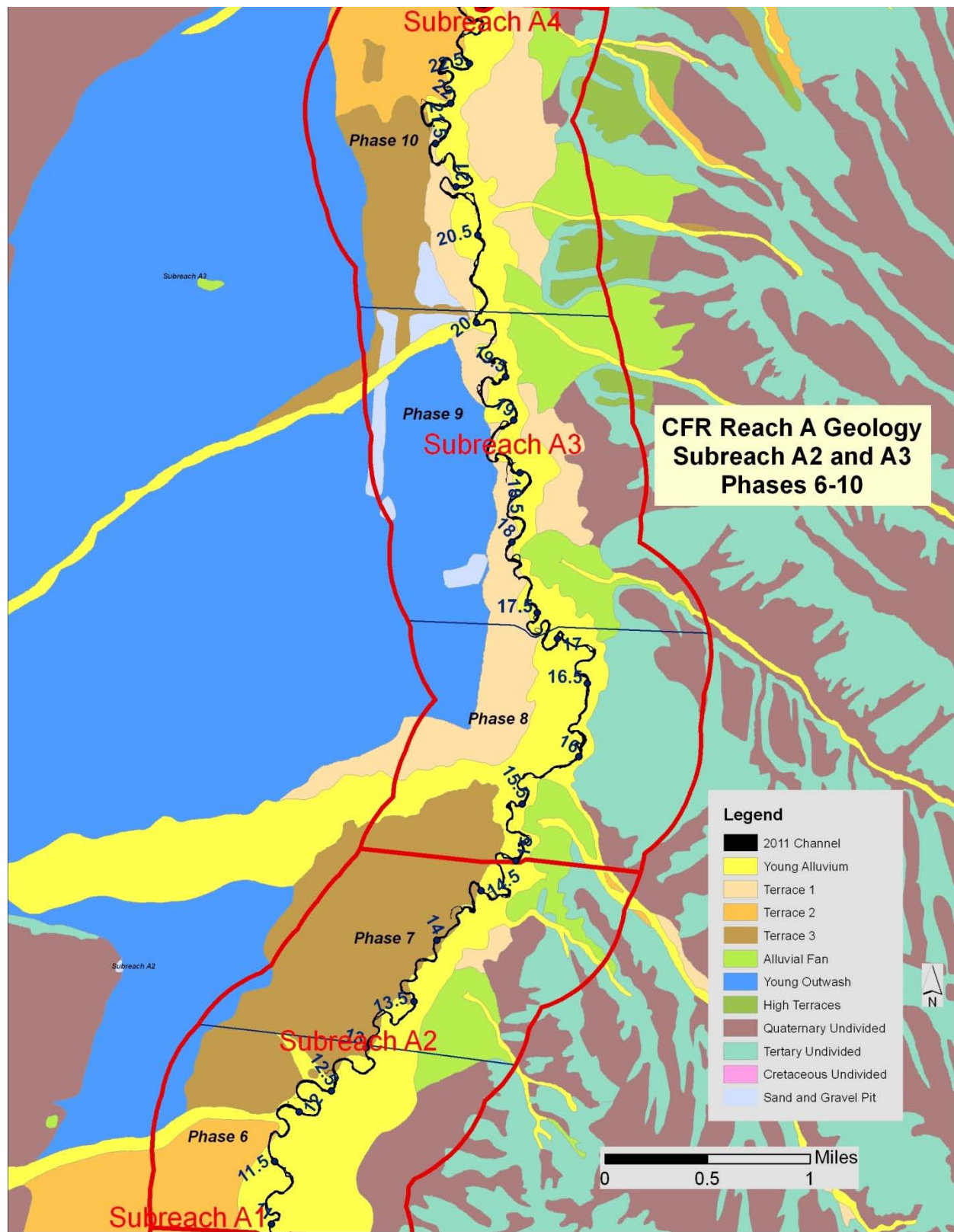


Figure A- 2. Subreaches A2 and A3 Geology

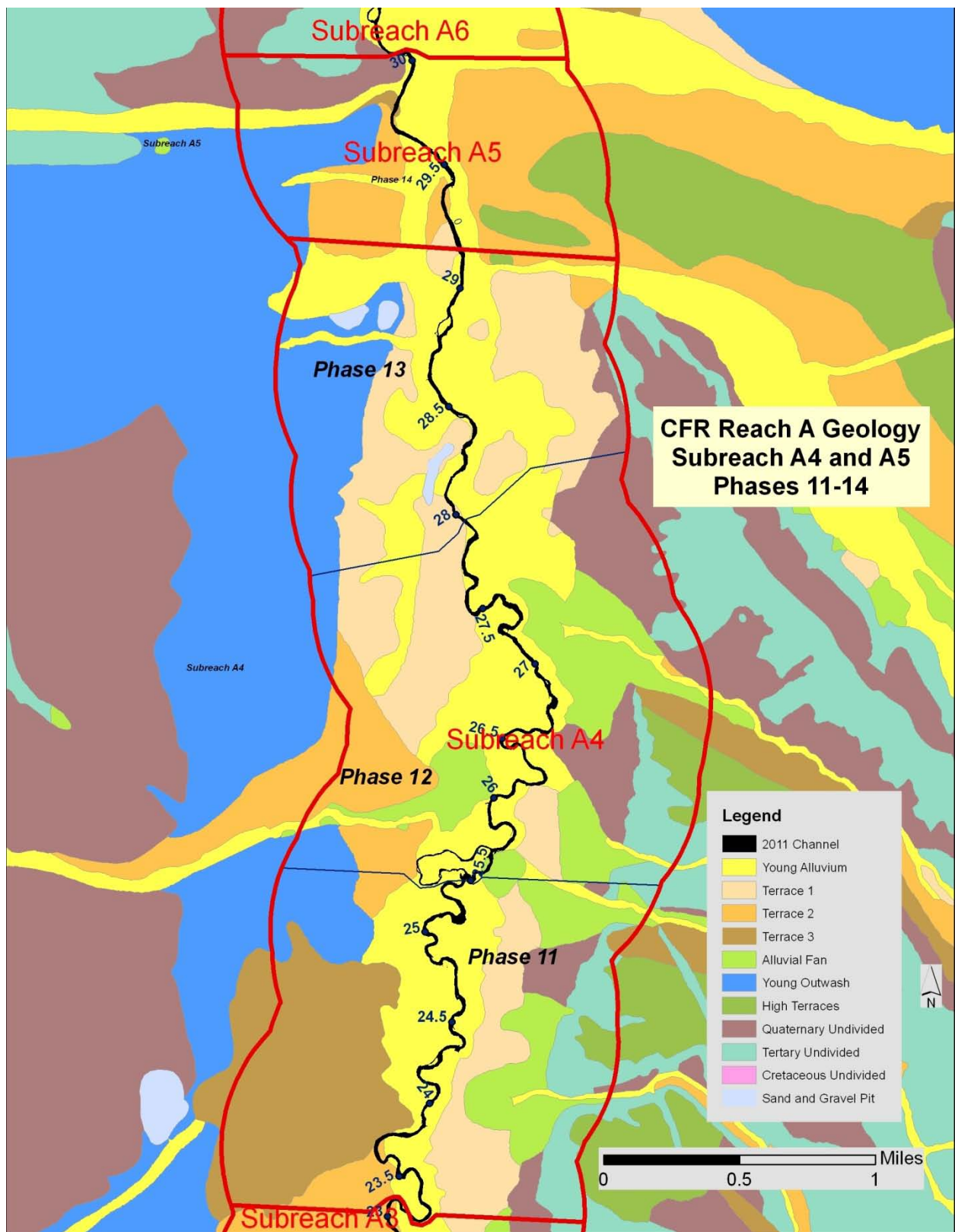


Figure A- 3. Subreaches A4 and A5 Geology

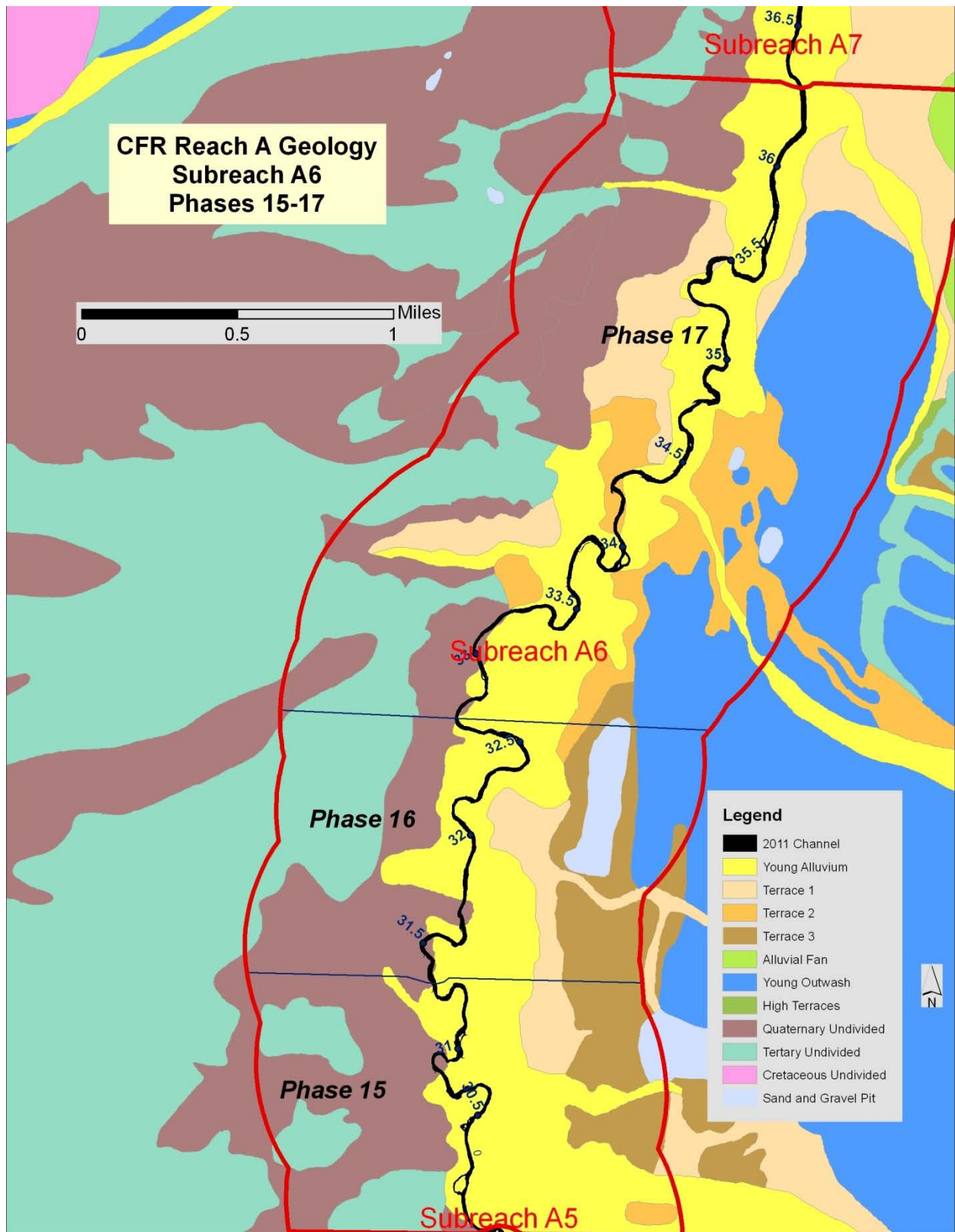


Figure A- 4. Subreach A6 Geology

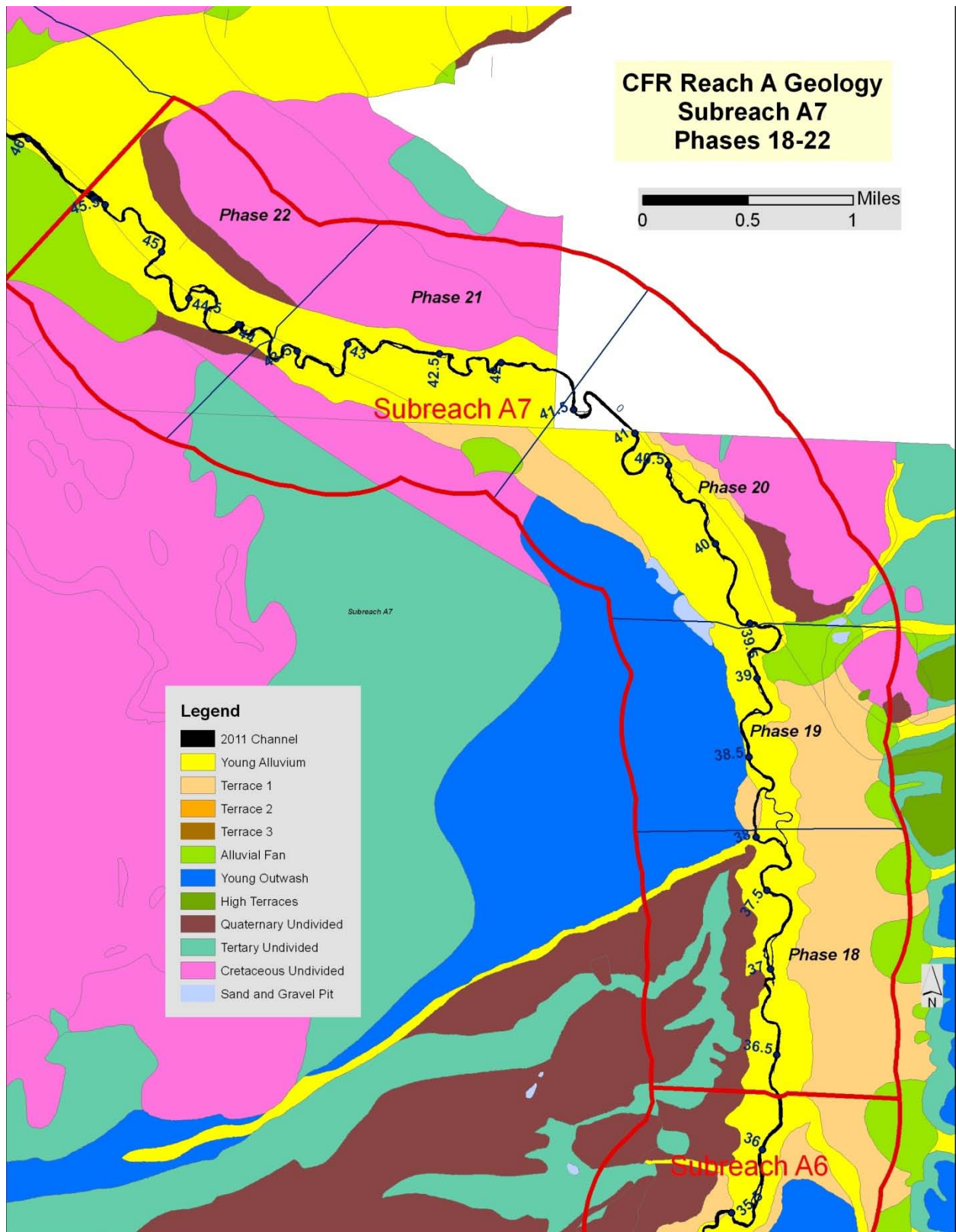


Figure A- 5. Subreach A7 Geology

Appendix B: Historic Maps

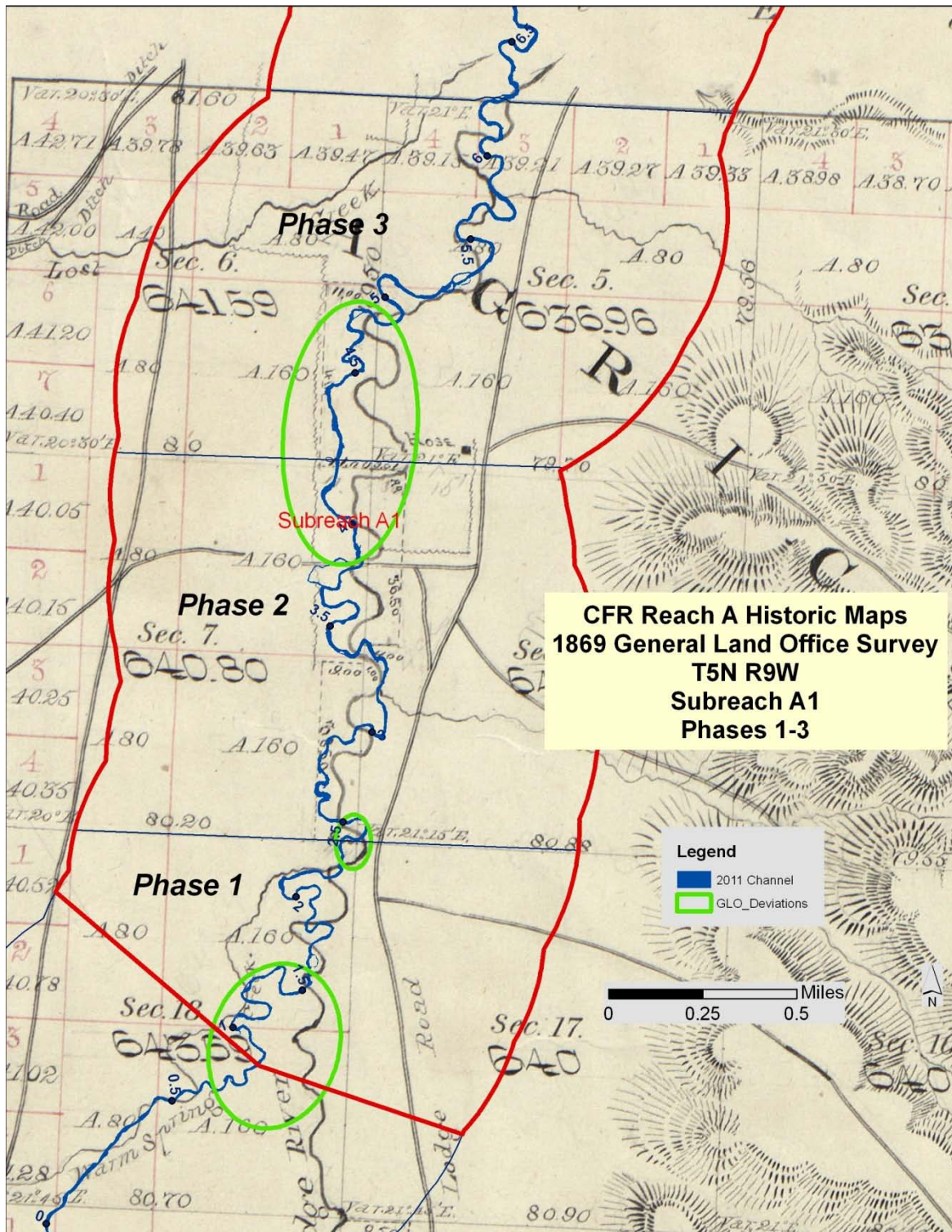


Figure B- 1. Subreach A1 (Phase 1-3) GLO maps with likely deviations from 2011 channel course circled.



Figure B- 2. Subreach A1-A3 (Phase 4-9) GLO maps with likely deviations from 2011 channel course circled.

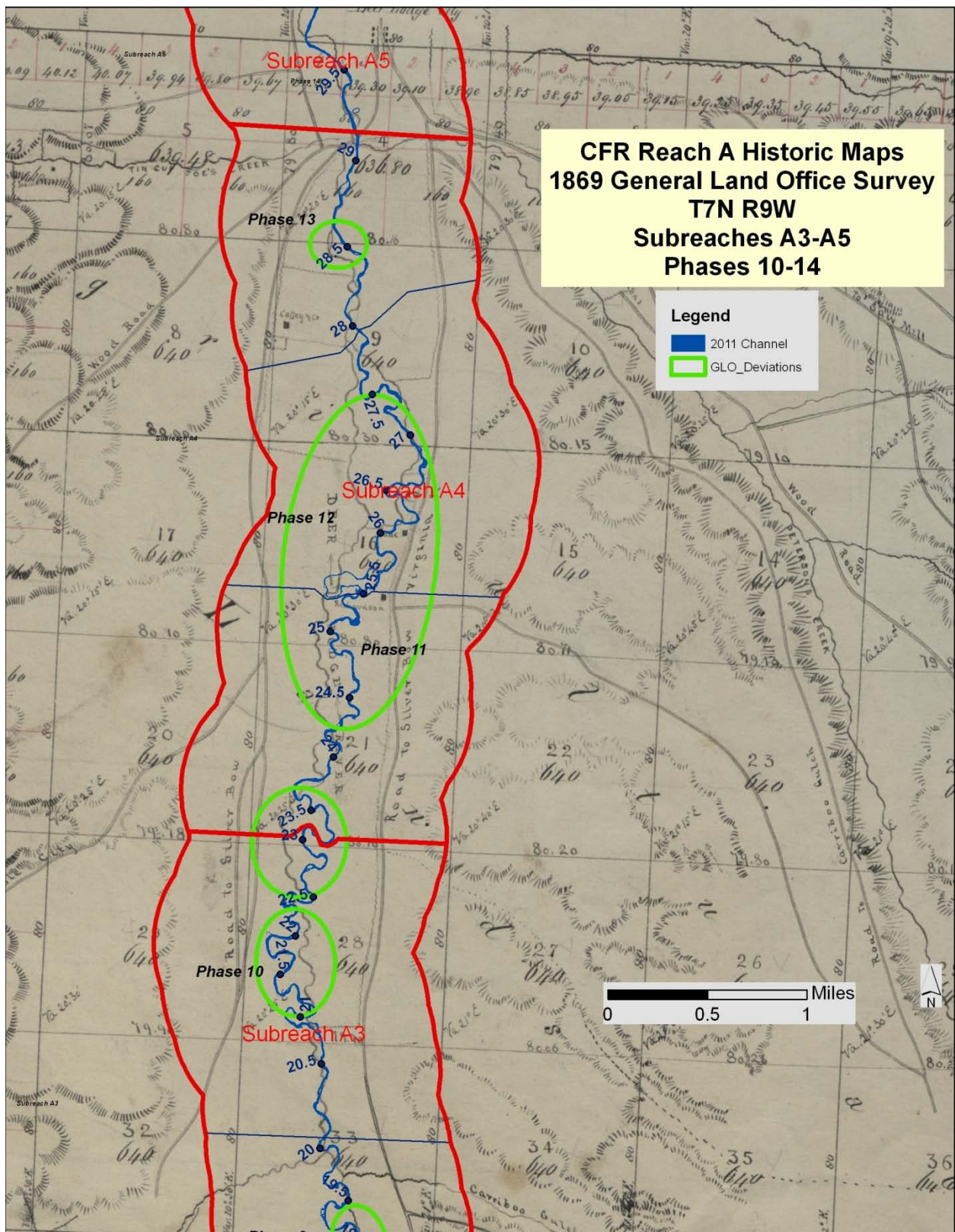


Figure B- 3. Subreach A3 – A4 (Phase 10-14) GLO maps with likely deviations from 2011 channel course circled.

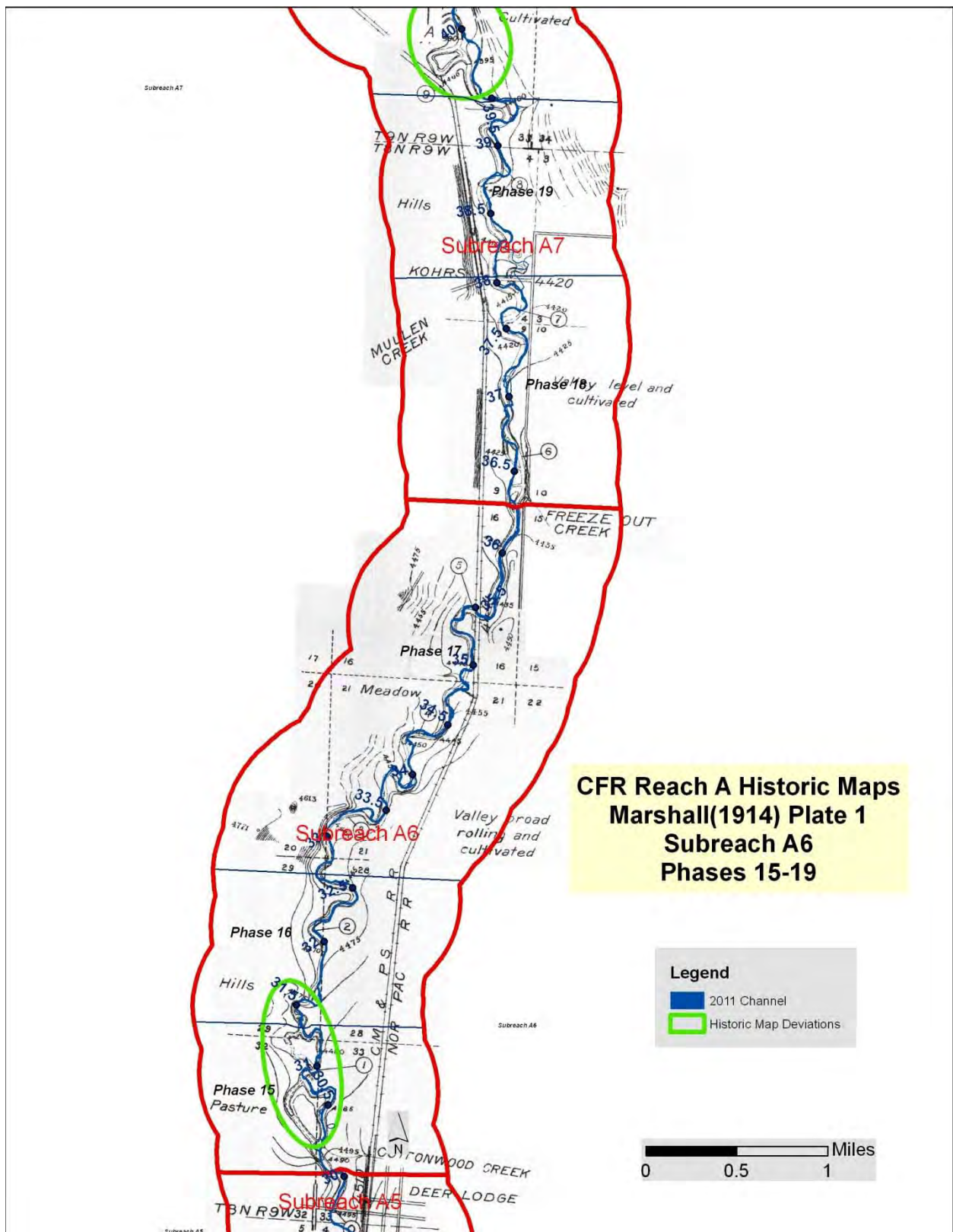


Figure B- 5. Subreach A6 (Phase 15-19) 1914 Marshall maps with likely deviations from 2011 channel course circled.

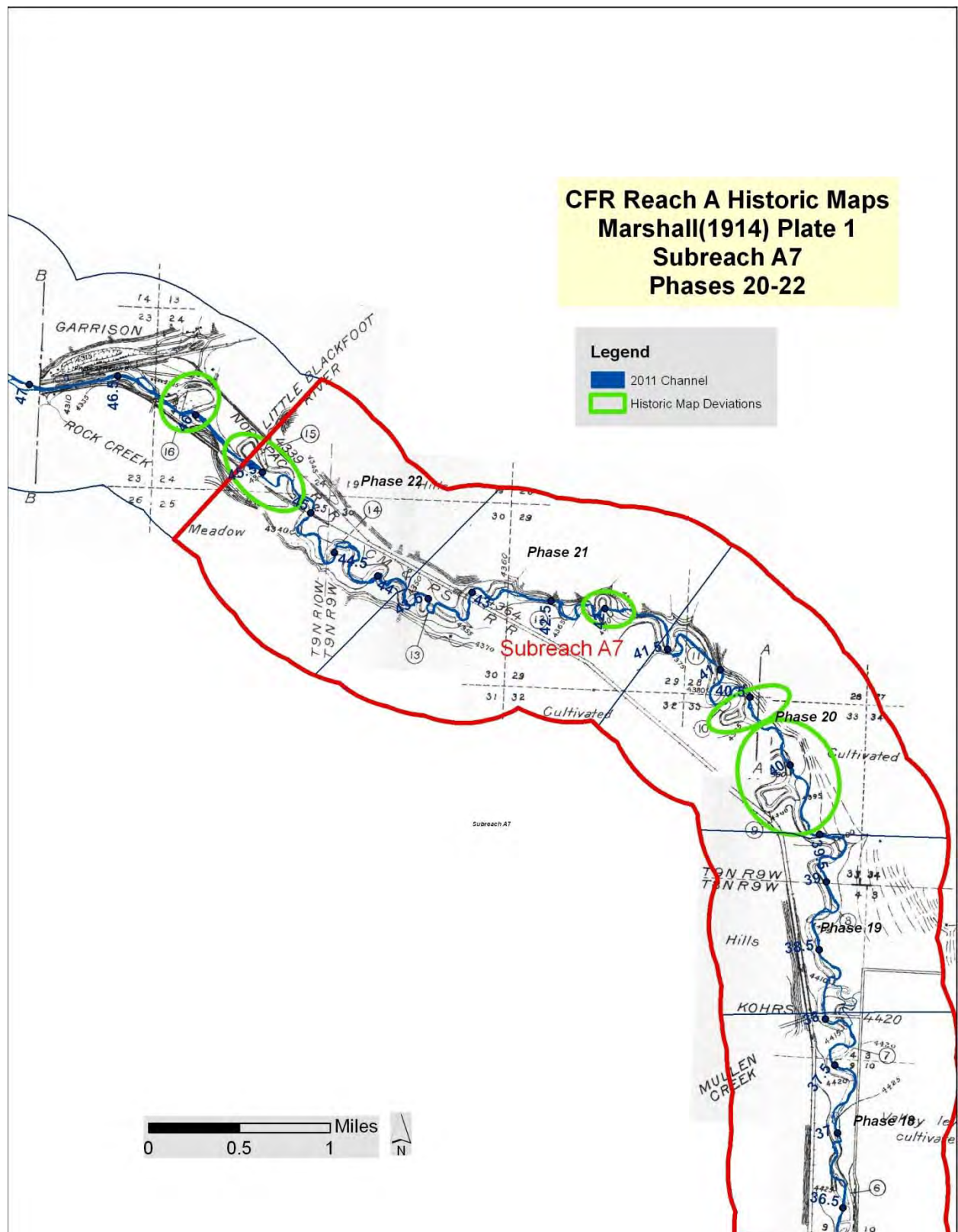


Figure B- 6. Subreach A7 (Phase 20-22) 1914 Marshall maps with likely deviations from 2011 channel course circled.

Appendix C: Erosion Inventory Mapping

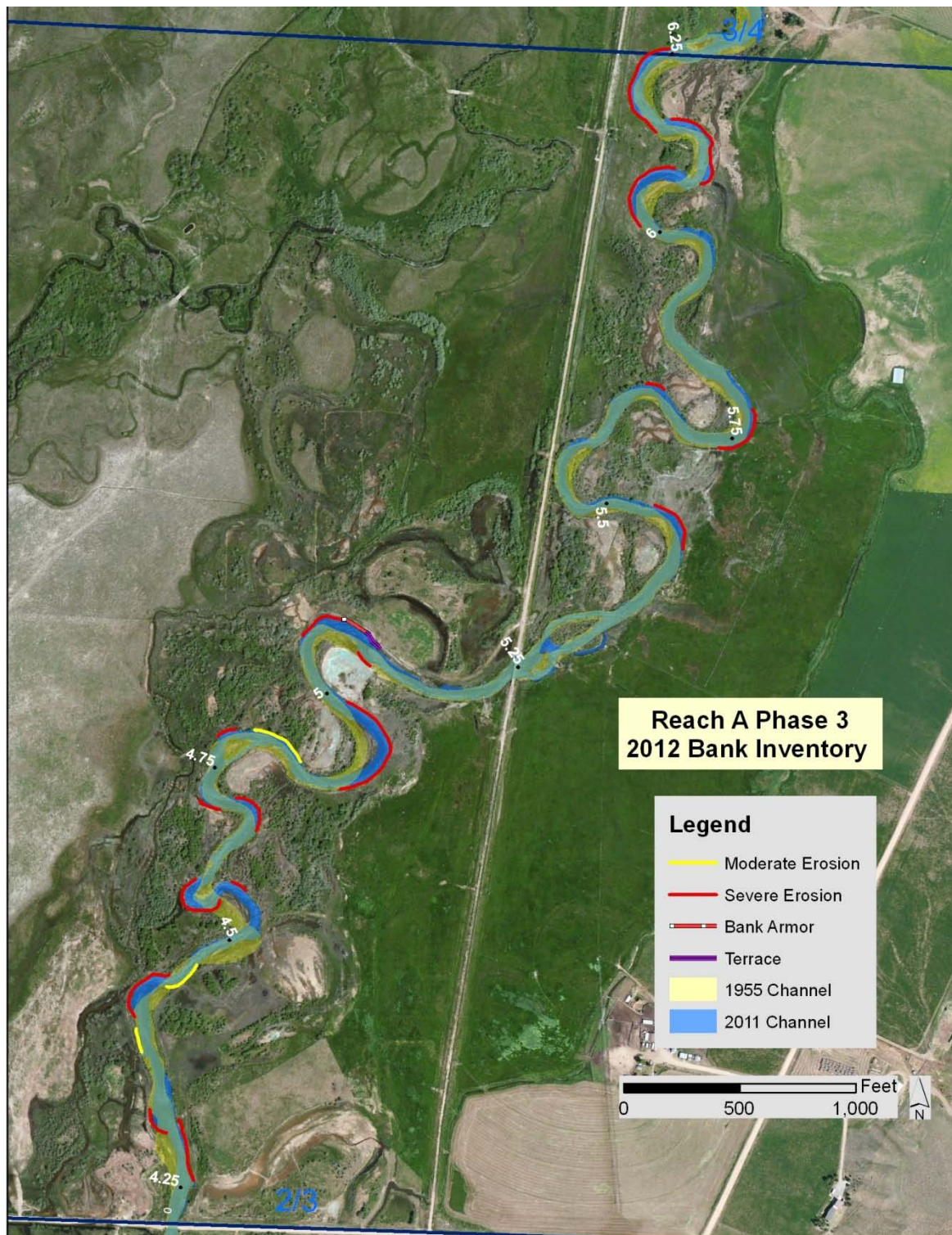


Figure C- 1. Erosion Inventory Map, Phase 3.

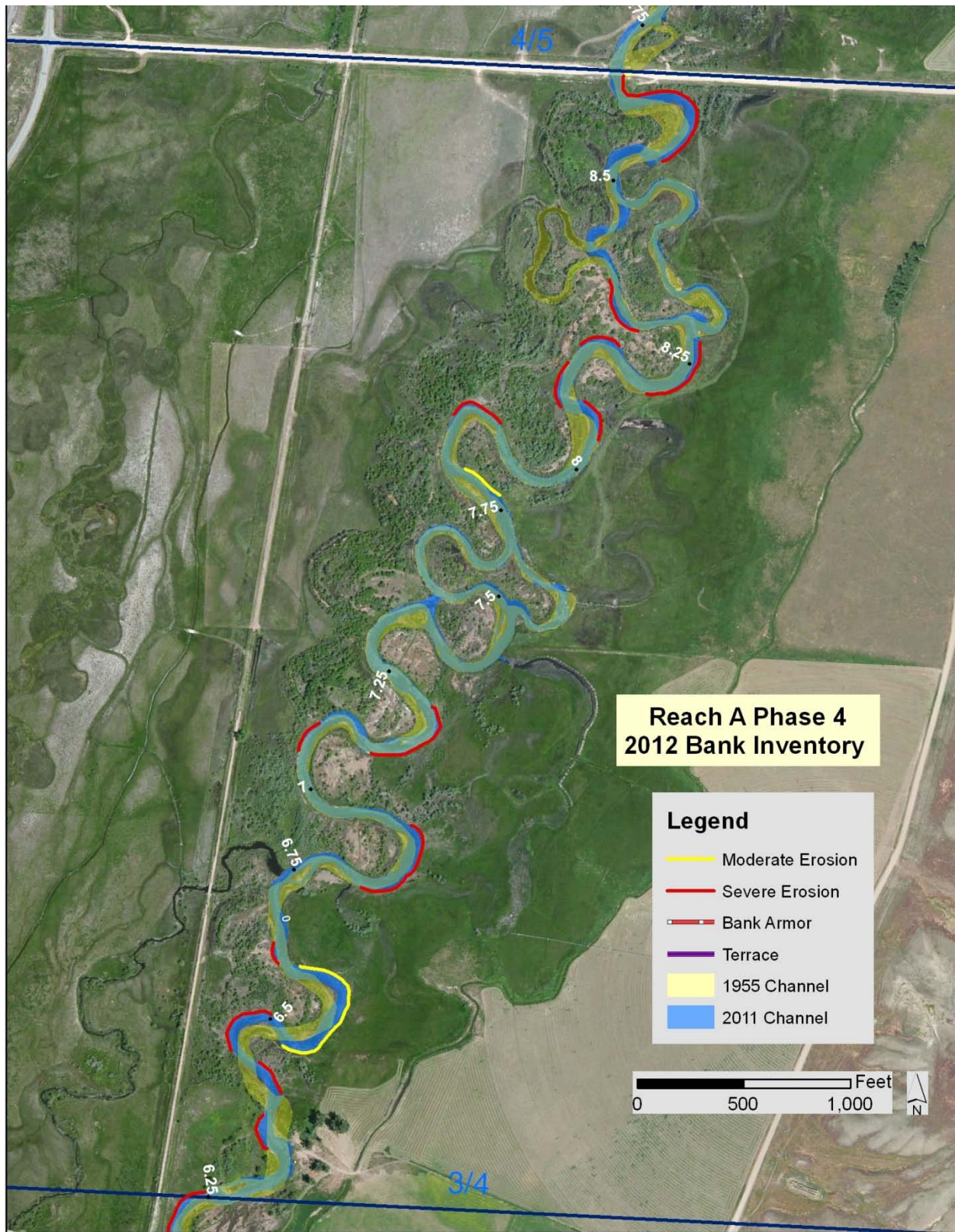


Figure C- 2. Erosion Inventory Map, Phase 4.

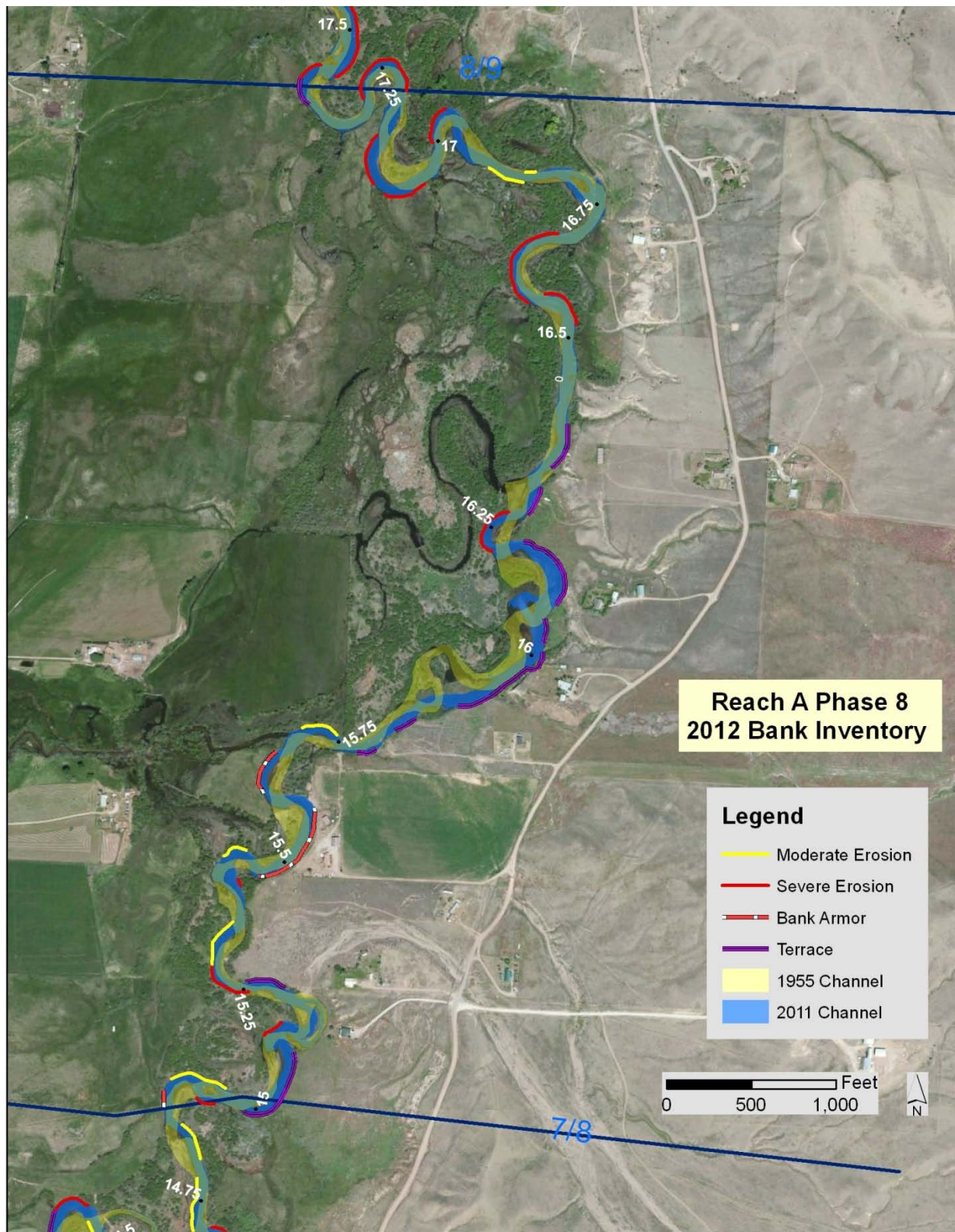


Figure C- 3. Erosion Inventory Map, Phase 8.

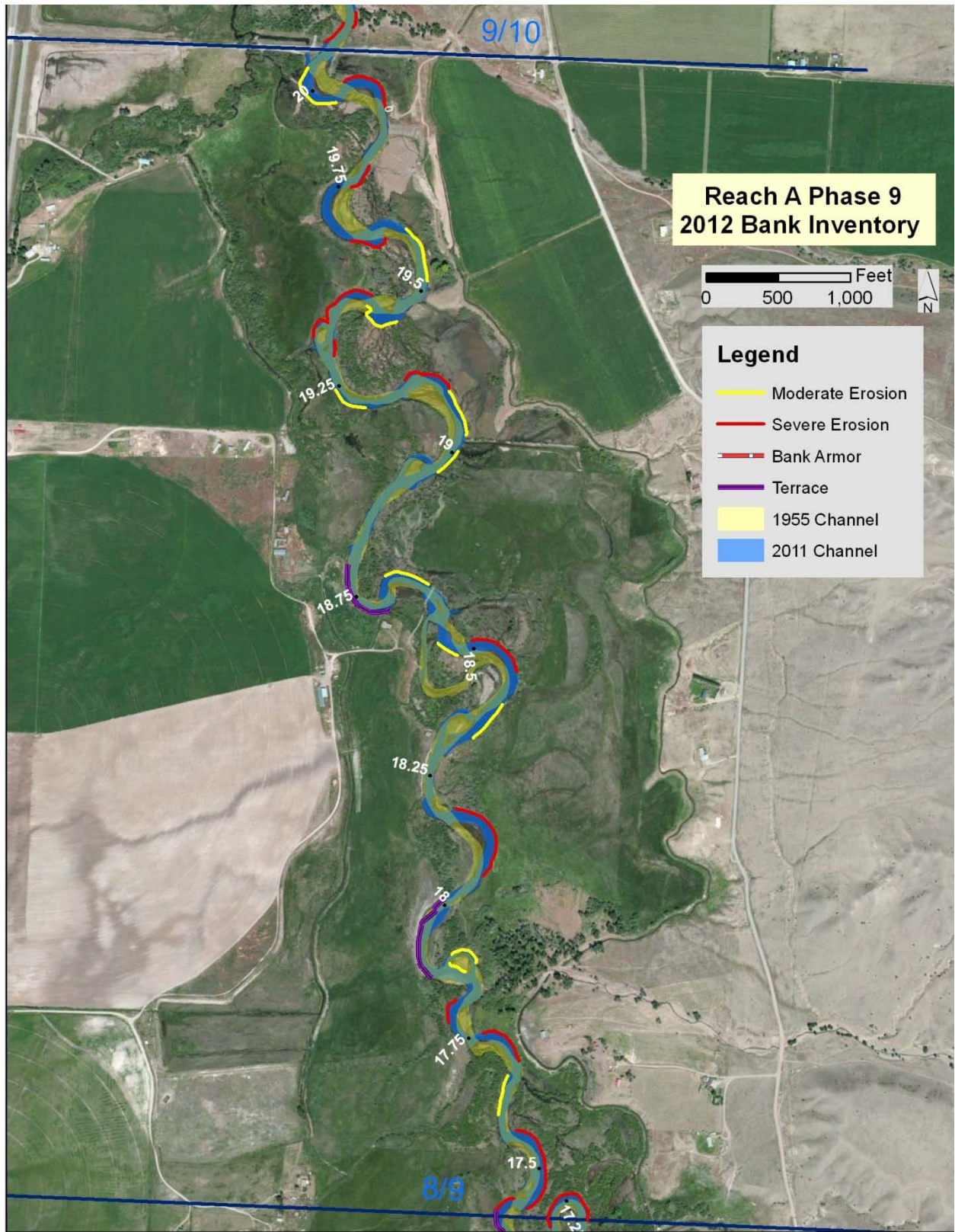


Figure C- 4. Erosion Inventory Map, Phase 9.

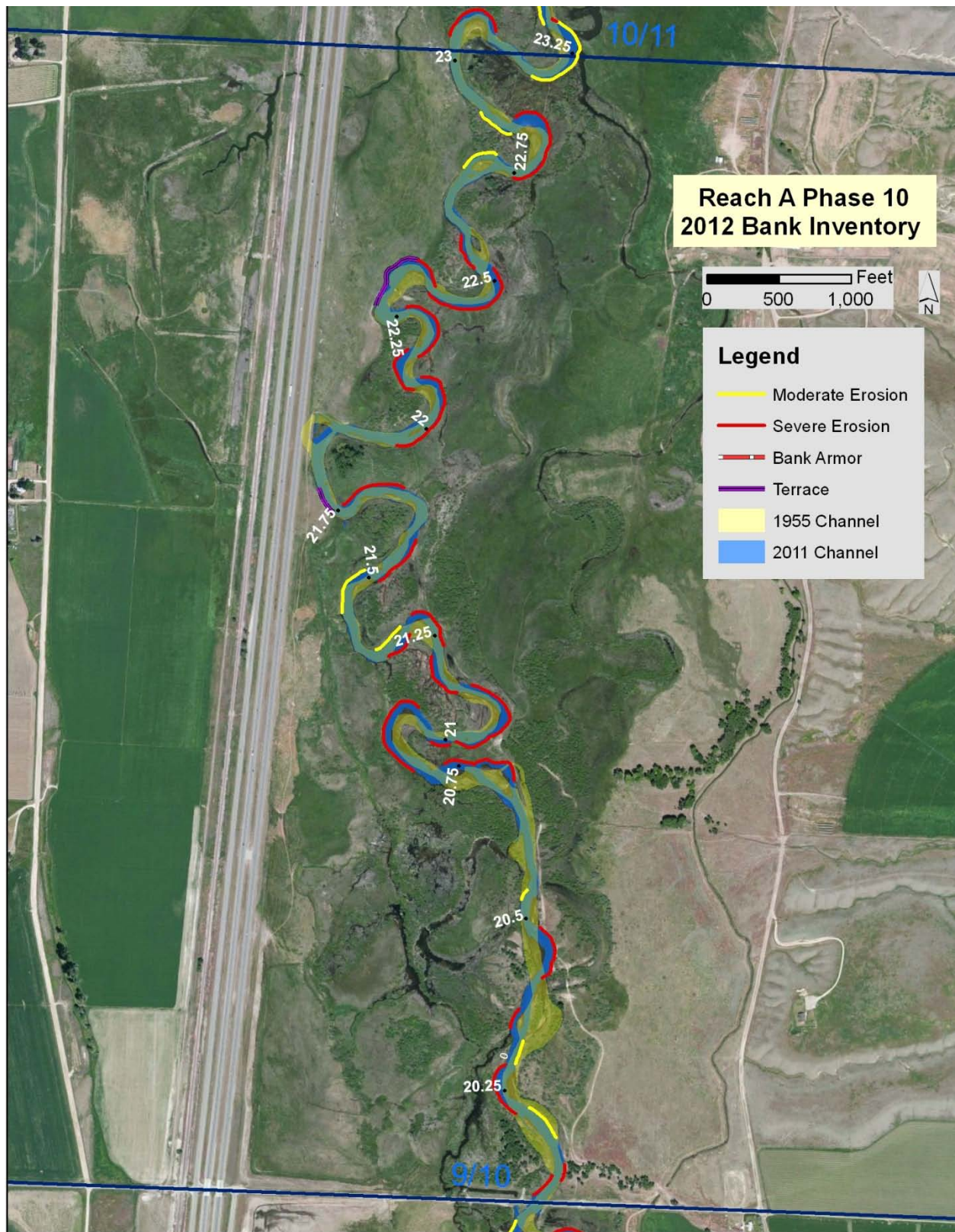


Figure C- 5. Erosion Inventory Map, Phase 10.

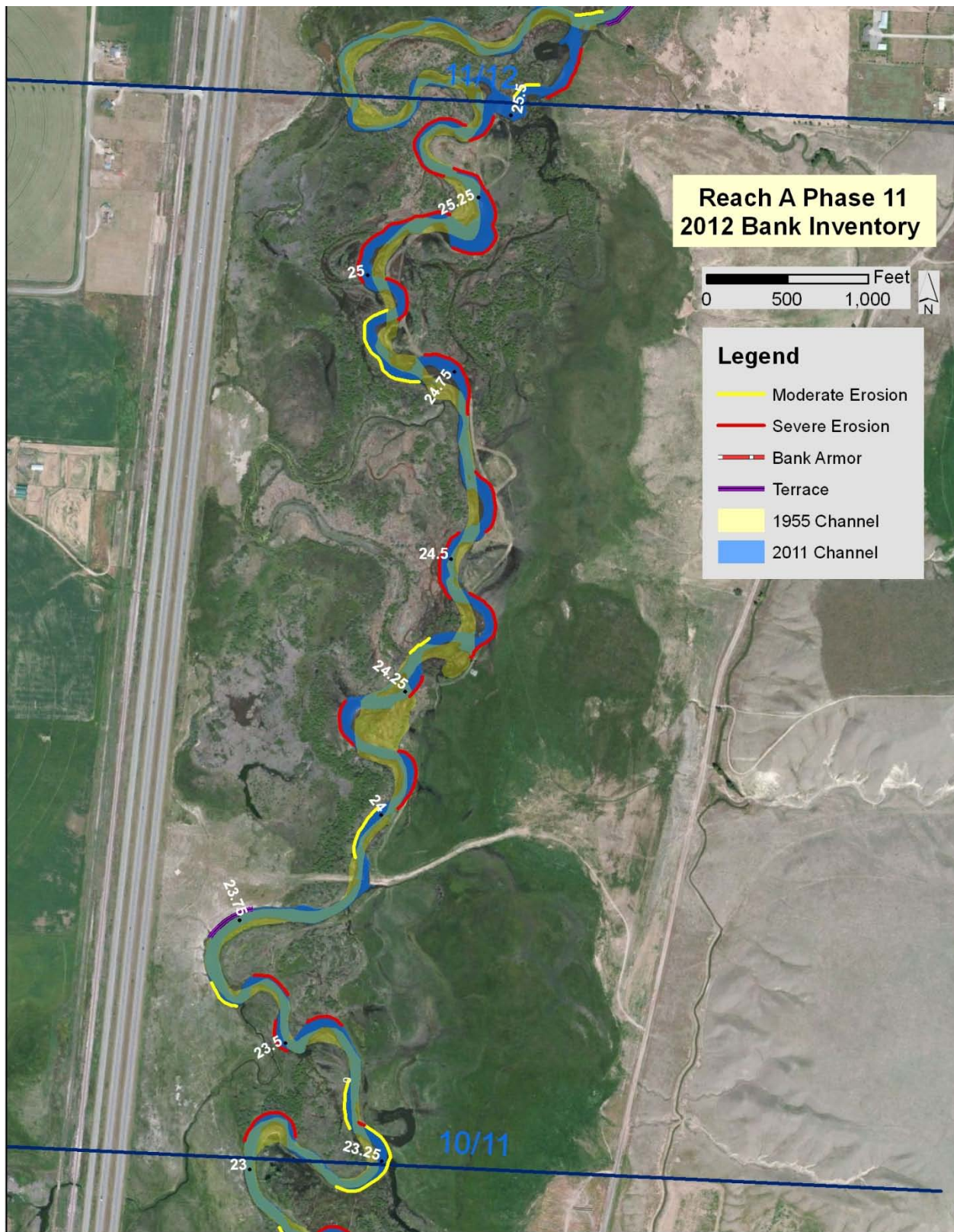


Figure C- 6. Erosion Inventory Map, Phase 11.

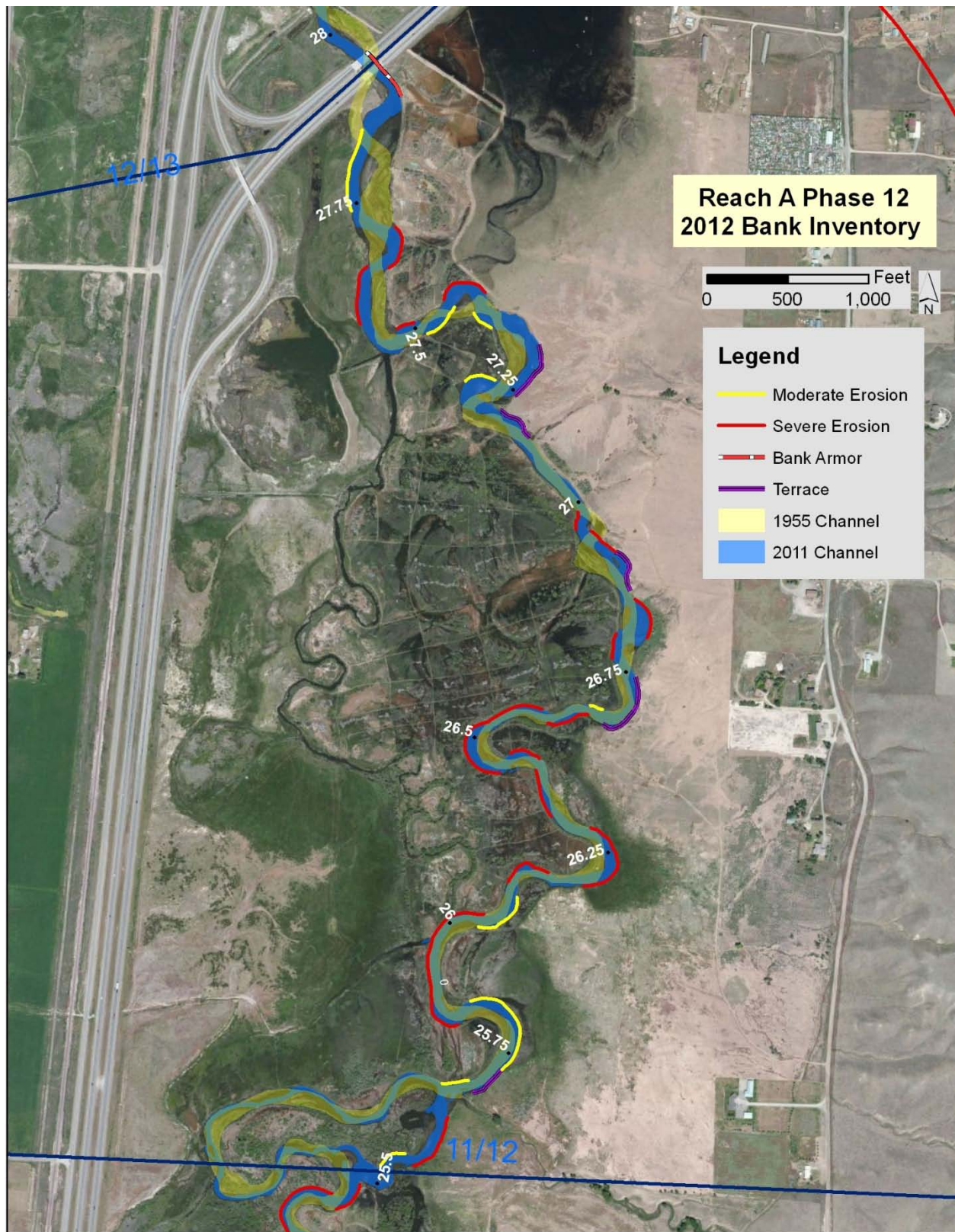


Figure C- 7. Erosion Inventory Map, Phase 12.

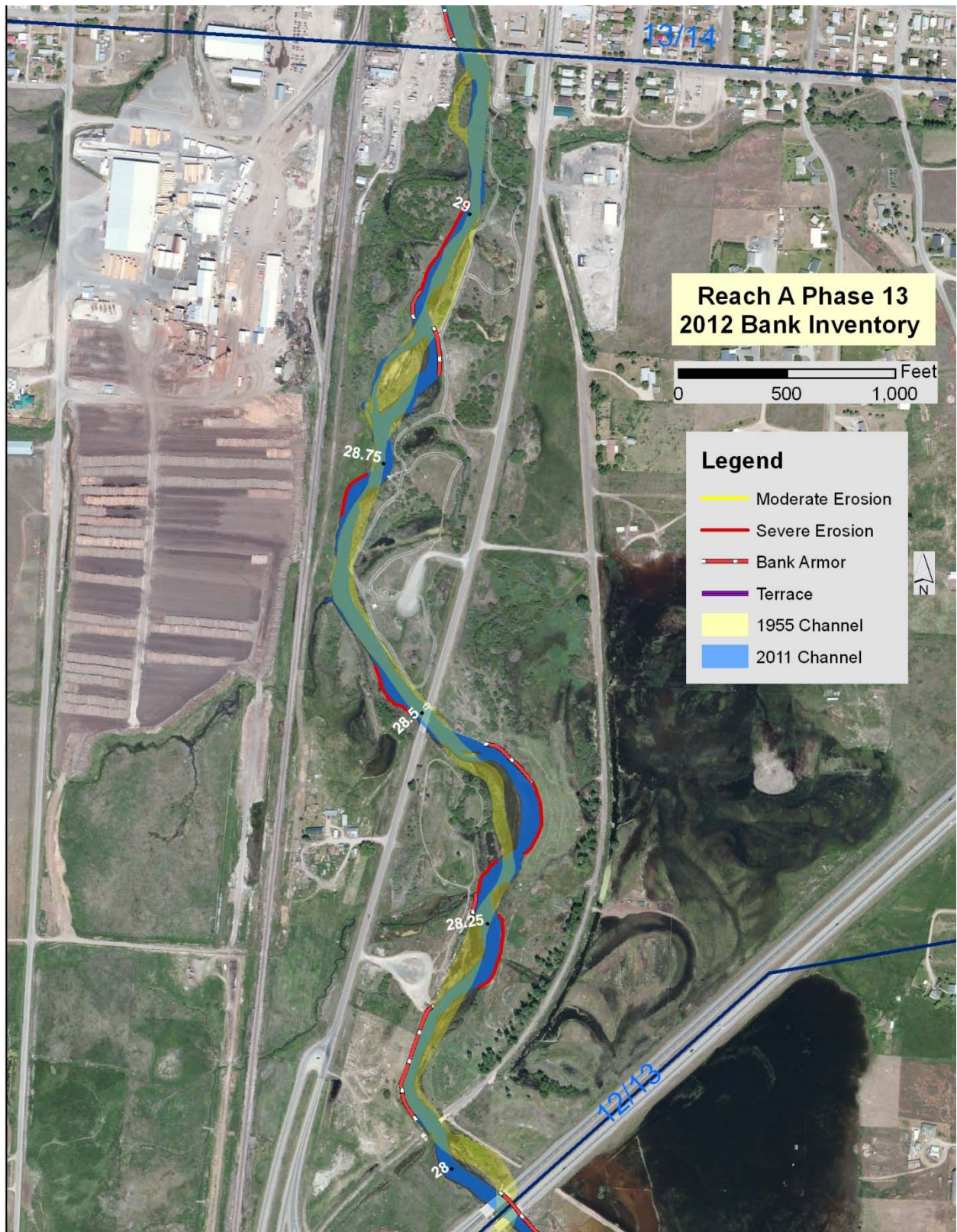


Figure C- 8. Erosion Inventory Map, Phase 13.



Figure C- 9. Erosion Inventory Map, Phase 14.

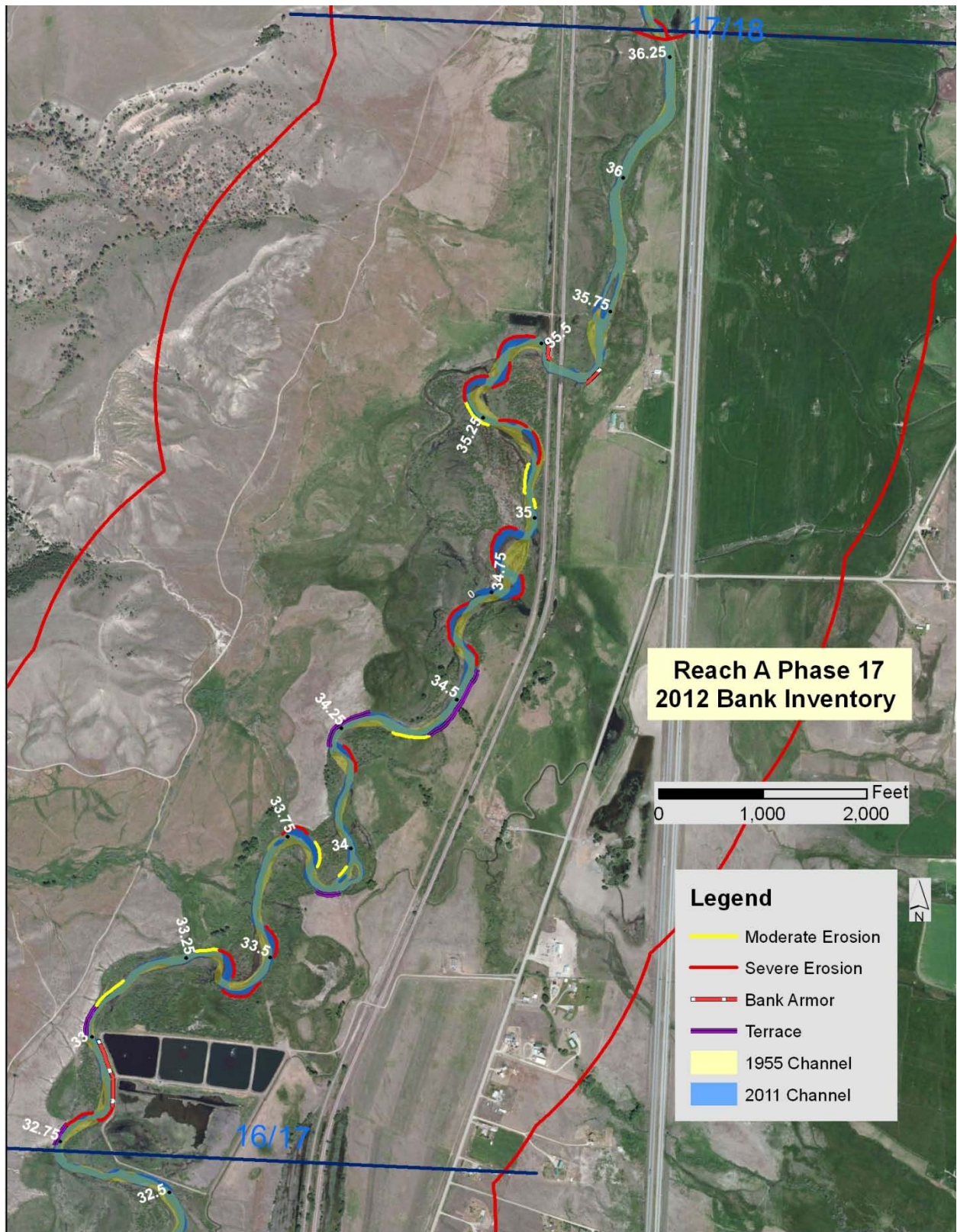


Figure C- 10. Erosion Inventory Map, Phase 17.

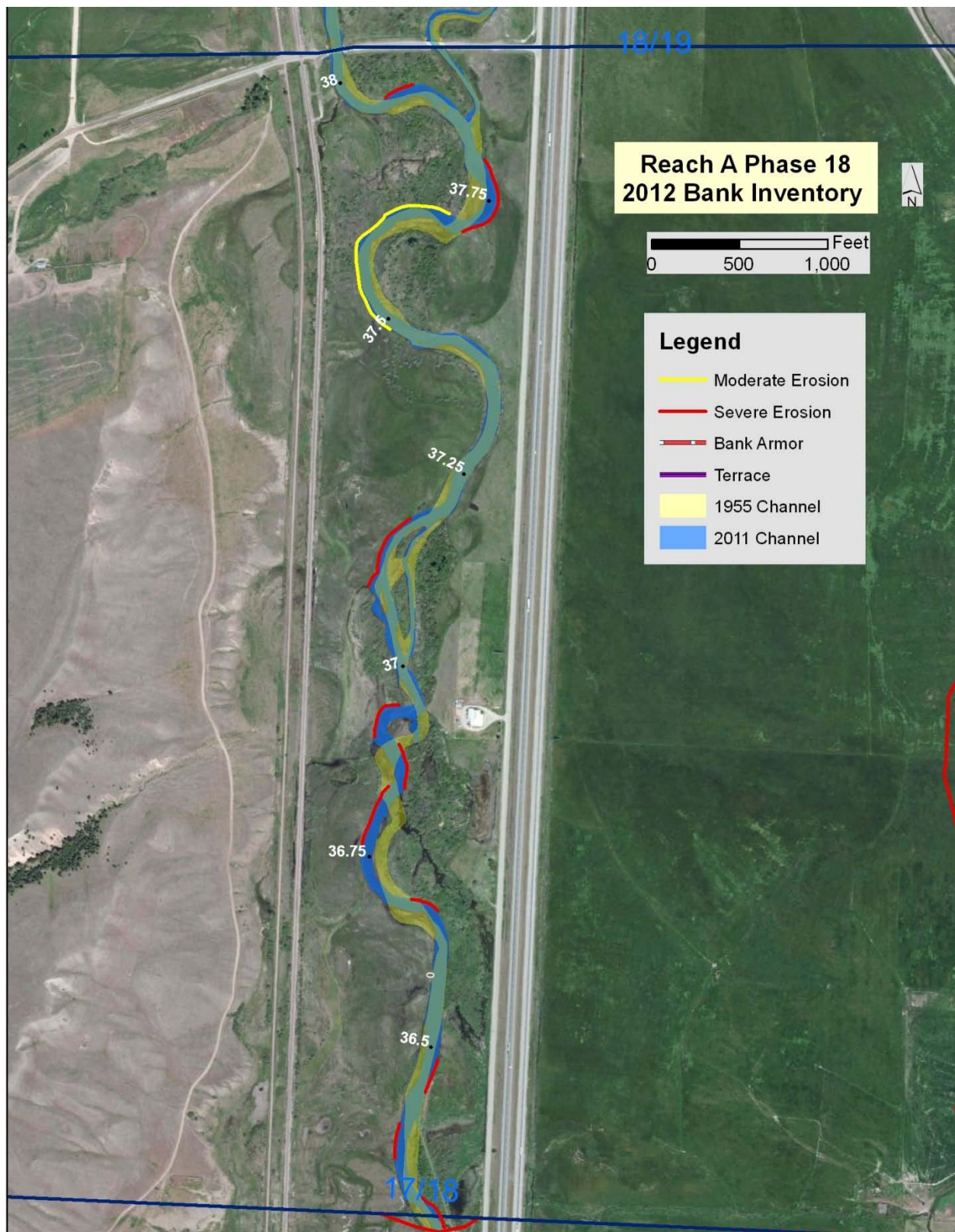


Figure C- 11. Erosion Inventory Map, Phase 18.

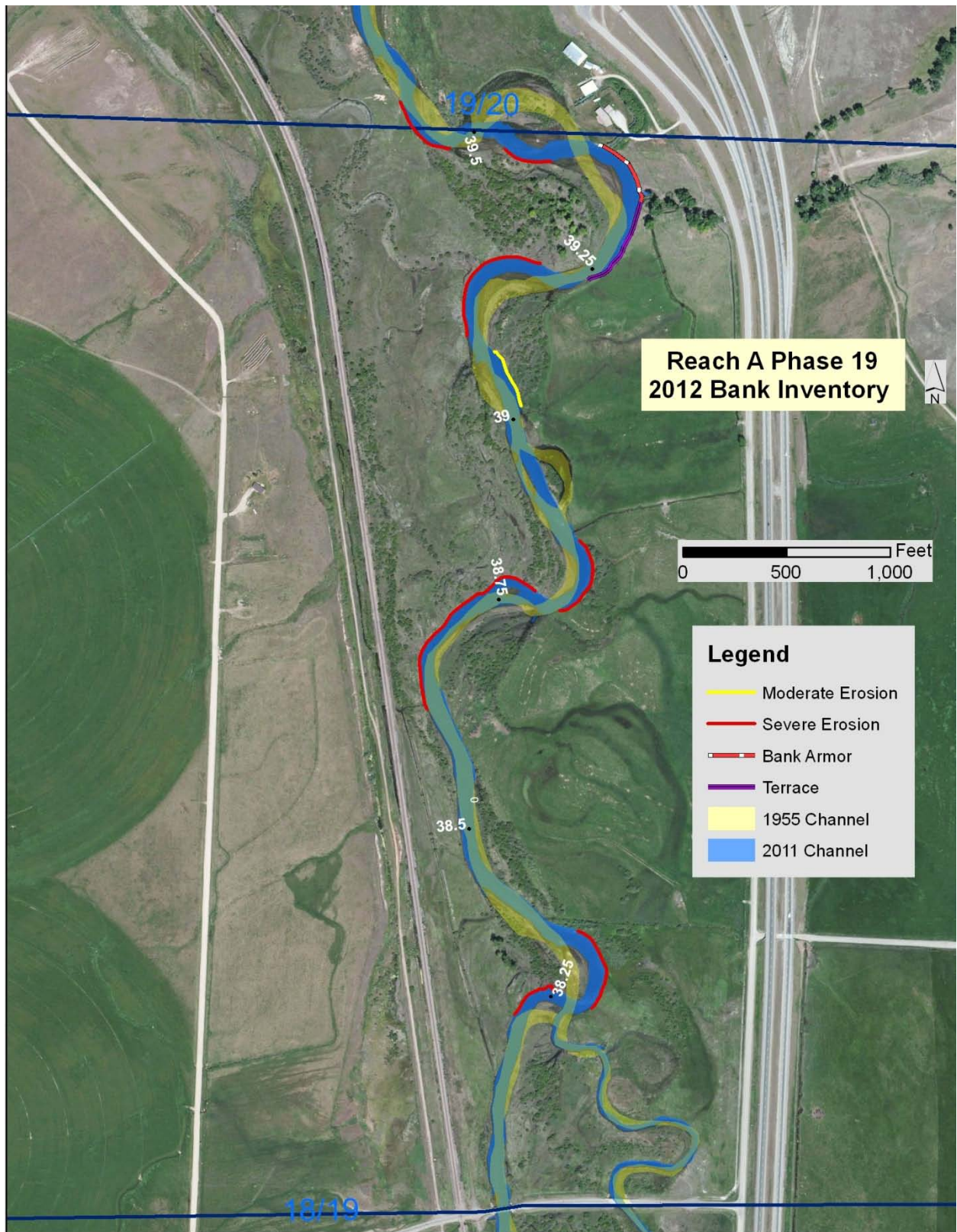


Figure C- 12. Erosion Inventory Map, Phase 19.

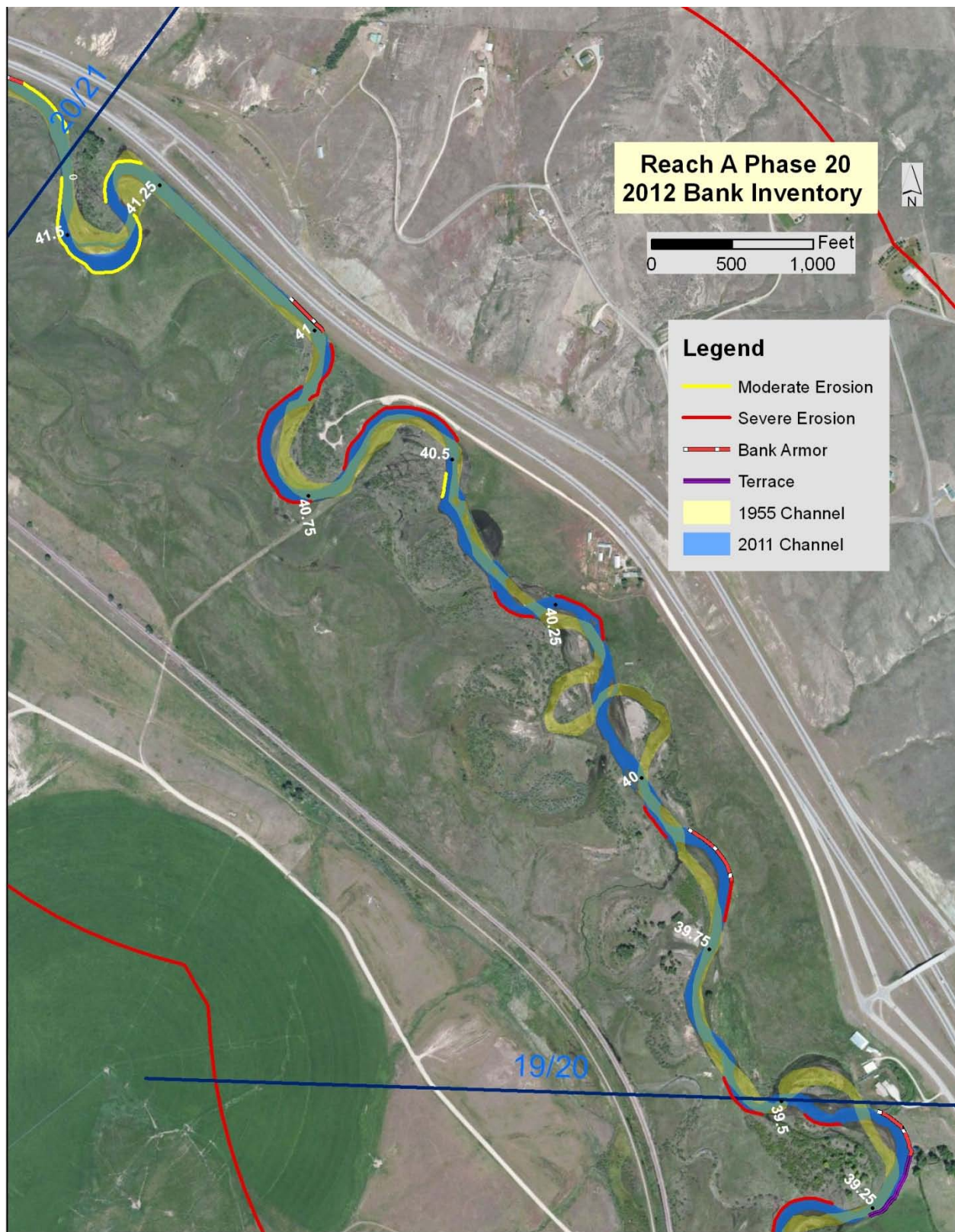


Figure C- 13. Erosion Inventory Map, Phase 20.

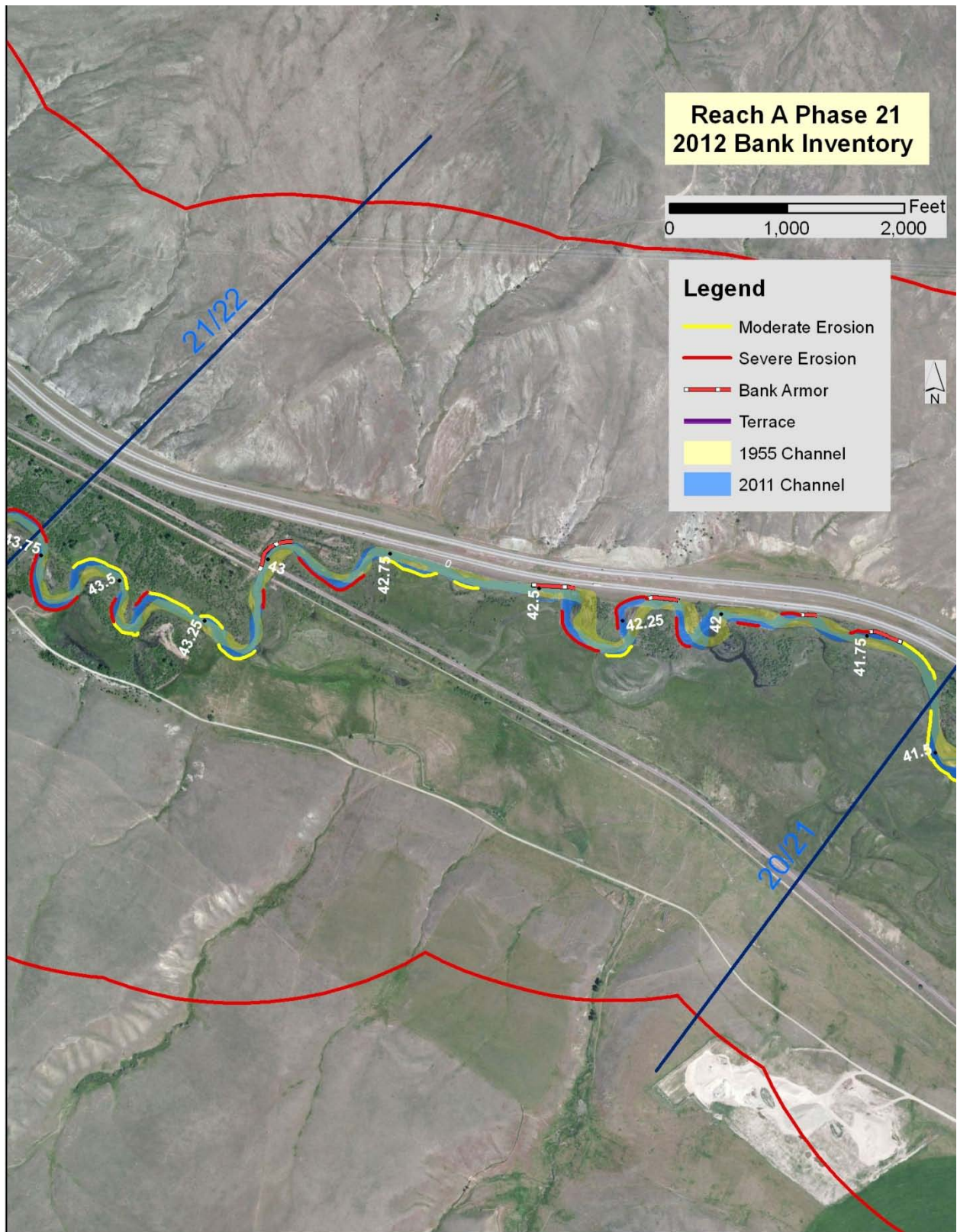


Figure C- 14. Erosion Inventory Map, Phase 21.

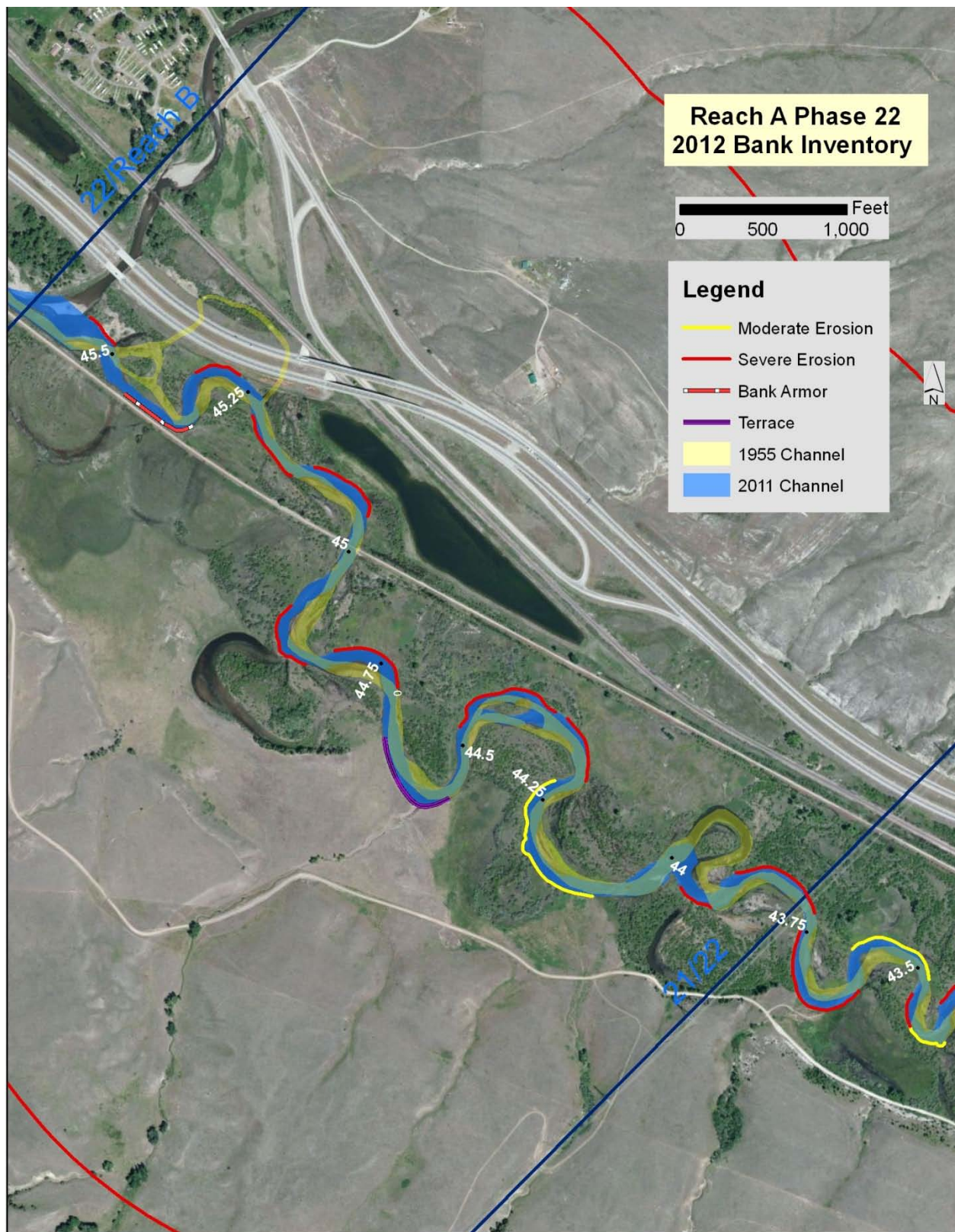


Figure C- 15. Erosion Inventory Map, Phase 22.