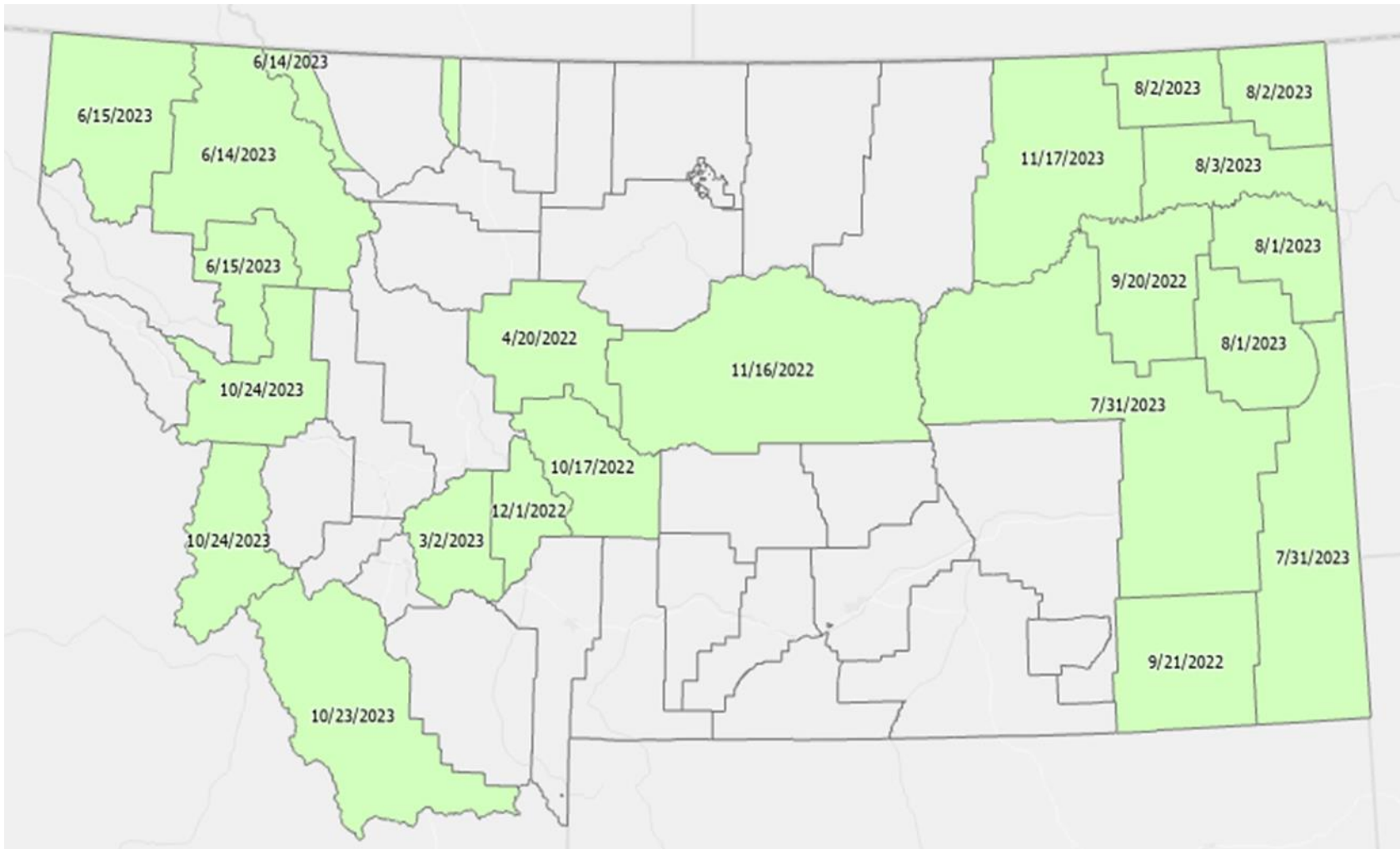
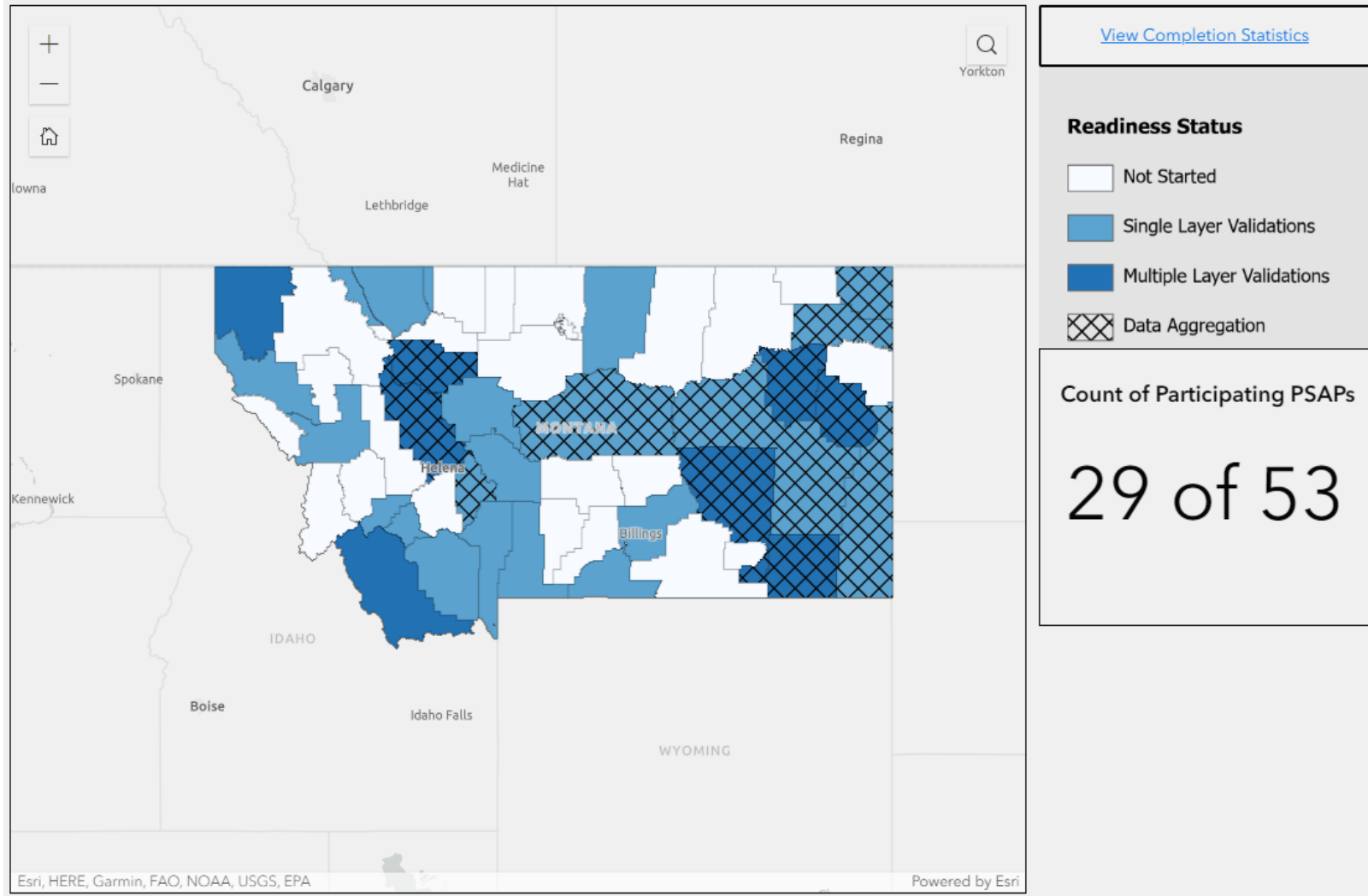


PSAP Visits



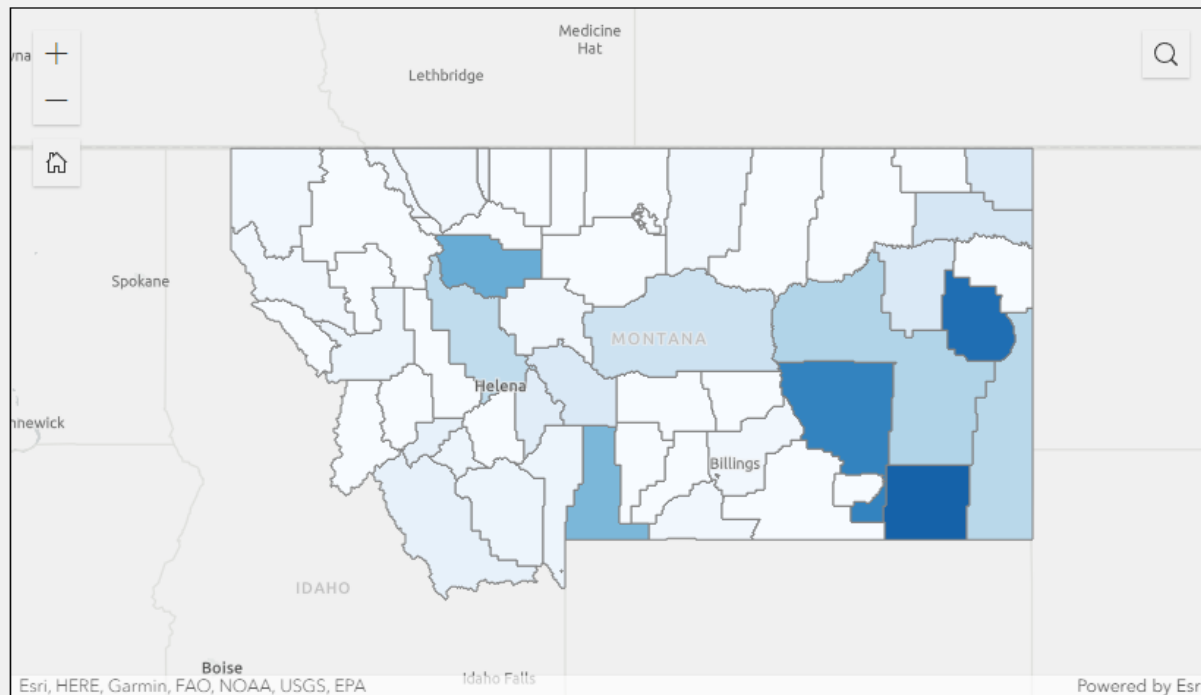
12/6/2023

Readiness Status



<https://next-generation-9-1-1-montana.hub.arcgis.com/pages/status-911>

Completion Status



[View Readiness Status](#)

Overall Percent Complete



10.13 %
Overall Statewide Completeness

Single Layer Validations

29.7 %

< Site\Structure Address Points >

Geometry checks, NENA attribute, layer self comparisons.

Legacy Multiple Layer Validations

3.6 %

< MSAG to RCL >

Site/Structure Address Points and Road Centerlines to ALI and MSAG checks help maintain and improve F9-1-1

Cross Feature Multiple Layer Validations

2.7 %

< SSAP to RCL and All Boundaries >

All essential layers are compared for needed attribute and spatial relationships.

Change Management

21.8 %

< Site\Structure Address Points >

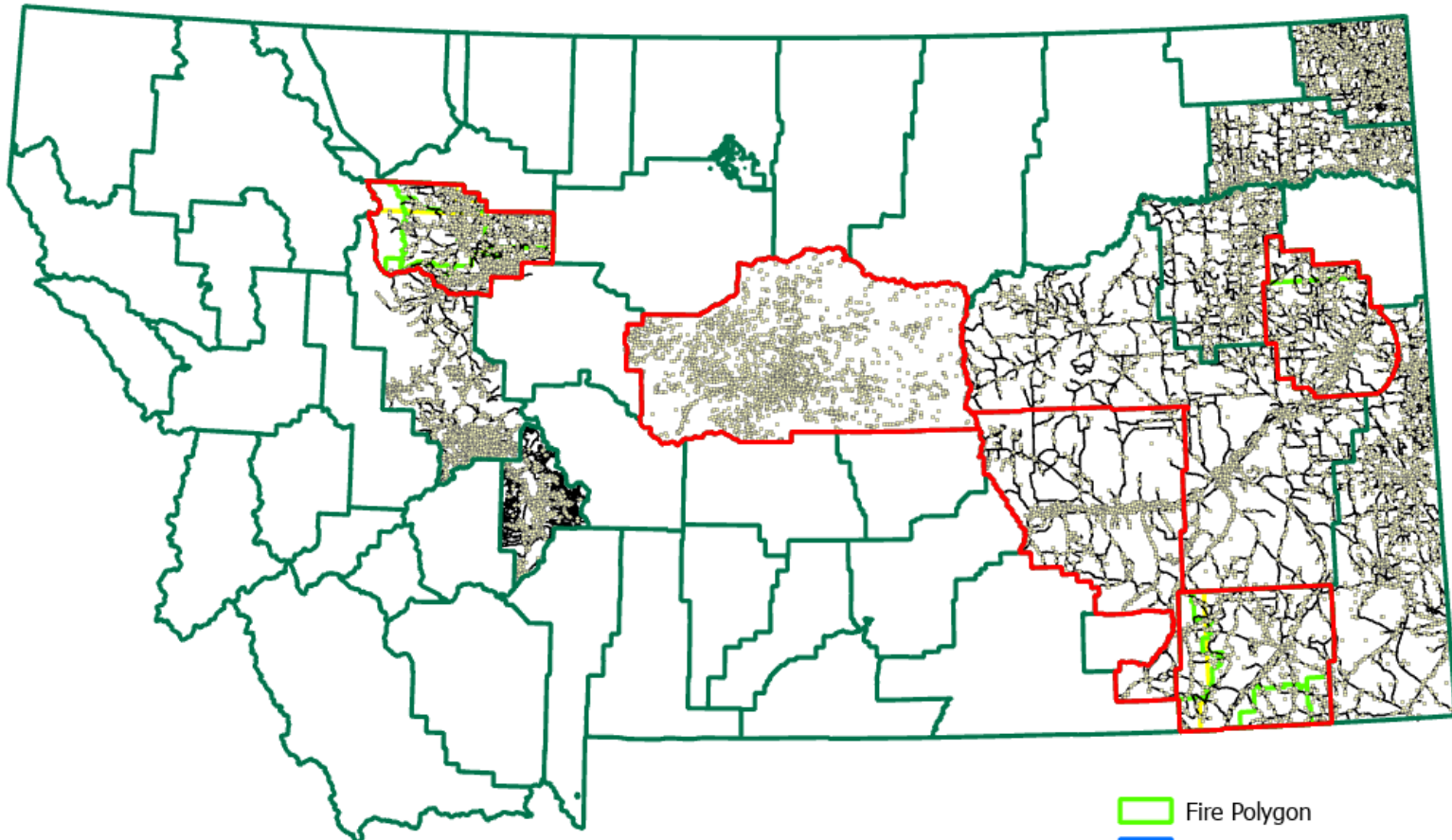
Once data quality has been accepted layers are aggregated to a statewide dataset.

Completeness is a measure of total completed assignments for each PSAP. Every PSAP has thirty seven total assignments to complete to have their data fully integrated into the system. With 55 registered primary PSAPS in Montana that equals 2,035 total Validation and Aggregation tasks that must be completed statewide for a completed statewide dataset.

<https://next-generation-9-1-1-montana.hub.arcgis.com/pages/status-911>



NG9-1-1 GIS Central Repository



- Site Structure Address Point
- Road Center Line
- Fire Polygon
- Police Polygon
- EMS Polygon
- PSAP Polygon
- Provisioning Polygon