

STEP 9 GENITAL EXAMINATION – FEMALES

Follow instructions on Envelopes 8A - 9E for Evidence Collection.

In General:

1. Examine the inner thighs, external genitalia and perineal area for foreign materials. Use magnification as needed.
2. Collect foreign materials/debris. (Envelope 8A)
3. Collect pubic hair combings and tape lift as needed. (Envelope 9A)
4. Swab visible stains/secretions, additional fluorescent areas, and areas indicated by patient for suspect saliva/semen using two swabs/area. (Envelope 8B, 9D)
5. Examine the inner thighs, external genitalia, and perineal area for injury. Document on diagrams and/or by photography.
6. Collect external genitals swabs. (Envelope 9B)
7. Examine the vagina and cervix for injury. Document on diagrams/forms.
8. Collect tampon/intravaginal object. (See Envelope 9C)
9. Collect four swabs from the vaginal/cervix. (Envelope 9C)
10. Examine the buttocks, perianal skin and anal folds for injury/materials. Document on diagrams/forms.
11. Conduct an anoscopic exam if rectal injury is suspected or if there is any sign of rectal bleeding. Document on diagrams/forms.
12. Collect two rectal and/or perianal swabs (if indicated). (Envelope 9E)
13. Lubricant used for speculum insertion? No Yes
If yes, what brand? _____
14. Lubricant used for anoscope insertion? No Yes
If yes, what brand? _____

Describe any injuries or abnormalities noted on diagrams:

Patient Identification Label

Diagram D

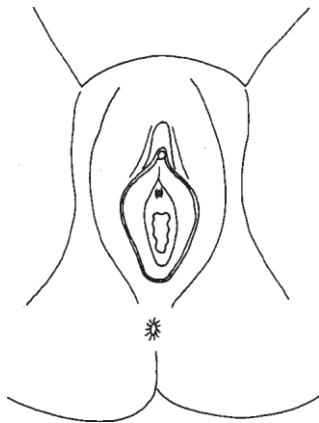


Diagram E

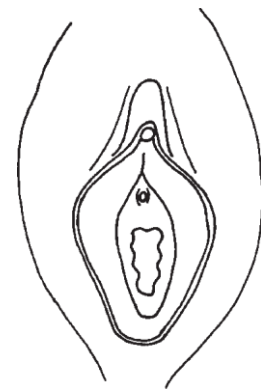


Diagram F

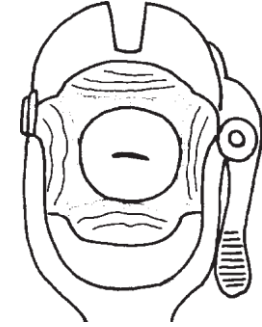
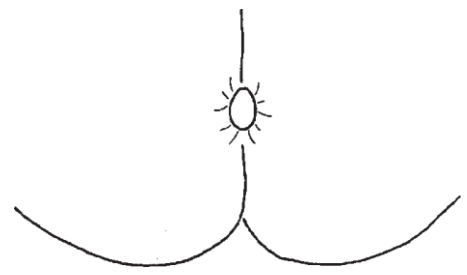


Diagram G



RECORD ALL SPECIMENS COLLECTED ON STEP 11 FORM

Clinician's Initials: _____