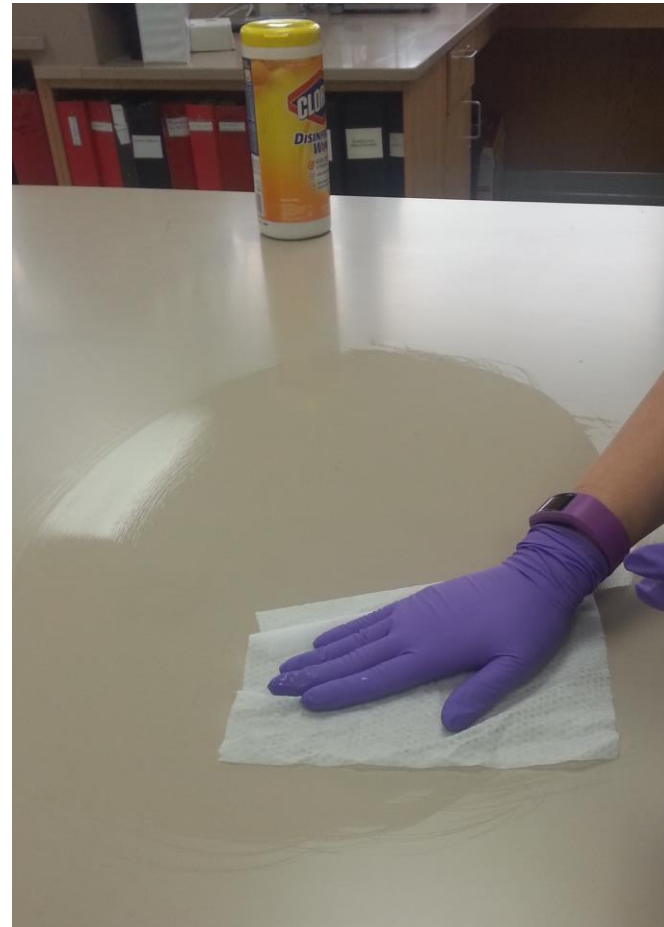




How To Properly Place Syringe Contents Into A Vial

Prepare Area



Clean the counter you will be using with a disinfecting wipe or other cleaner

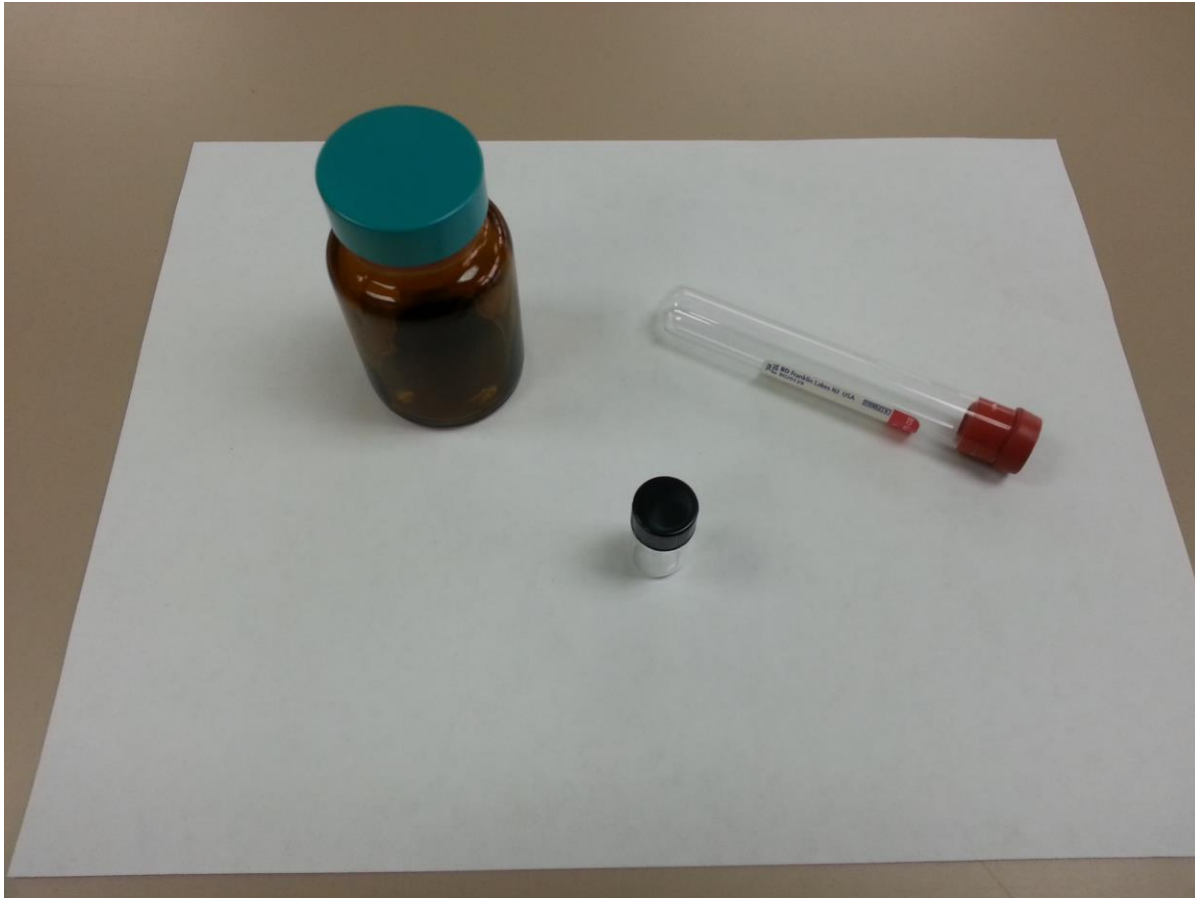
Gather Protective Equipment



You will need:

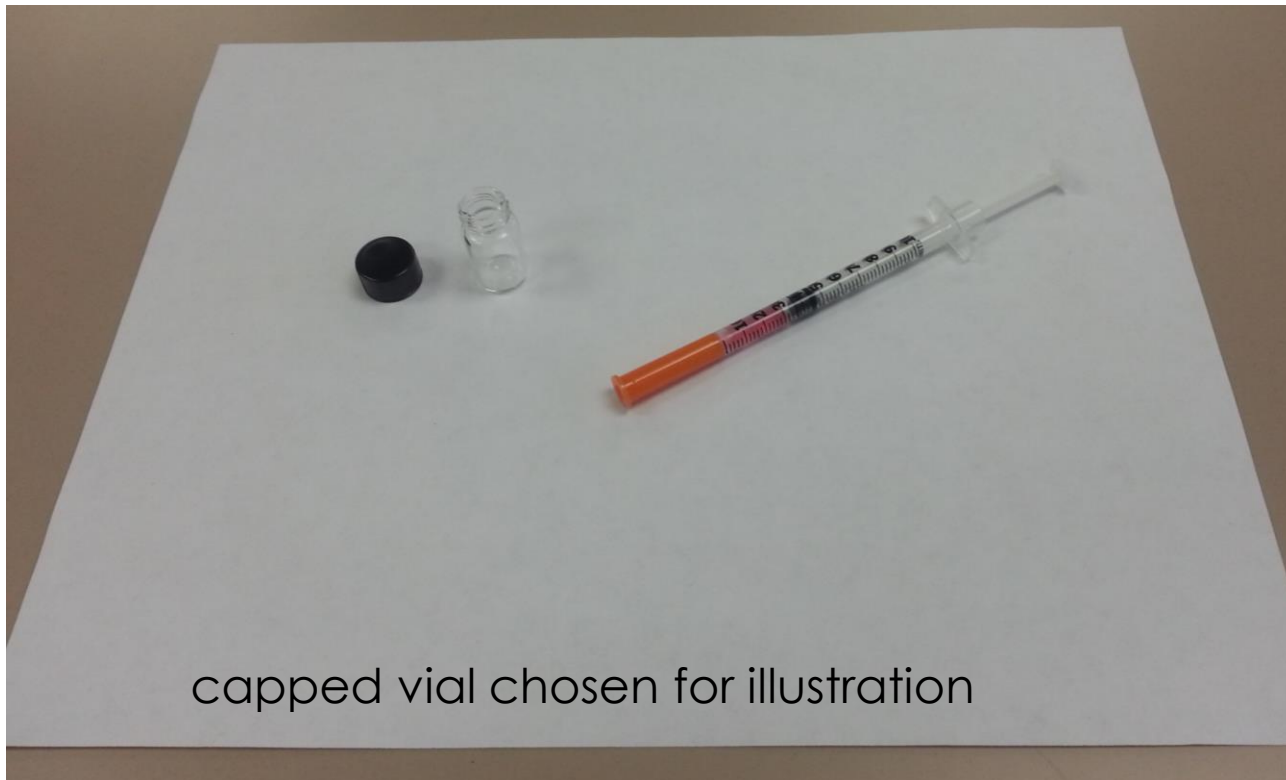
- A clean piece of paper to work on
- A pair of safety glasses
- At least one pair of gloves

Gather Equipment



- Choose an appropriate SEALABLE container

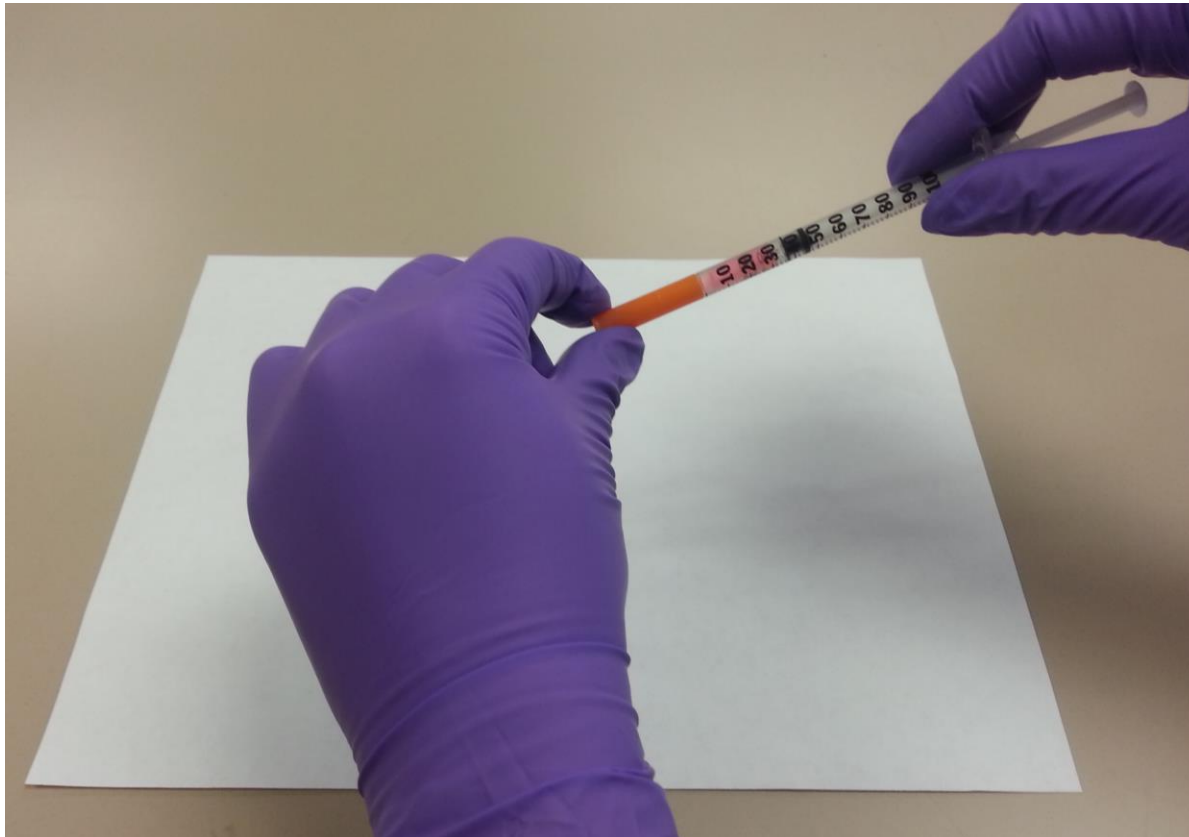
The Procedure



capped vial chosen for illustration

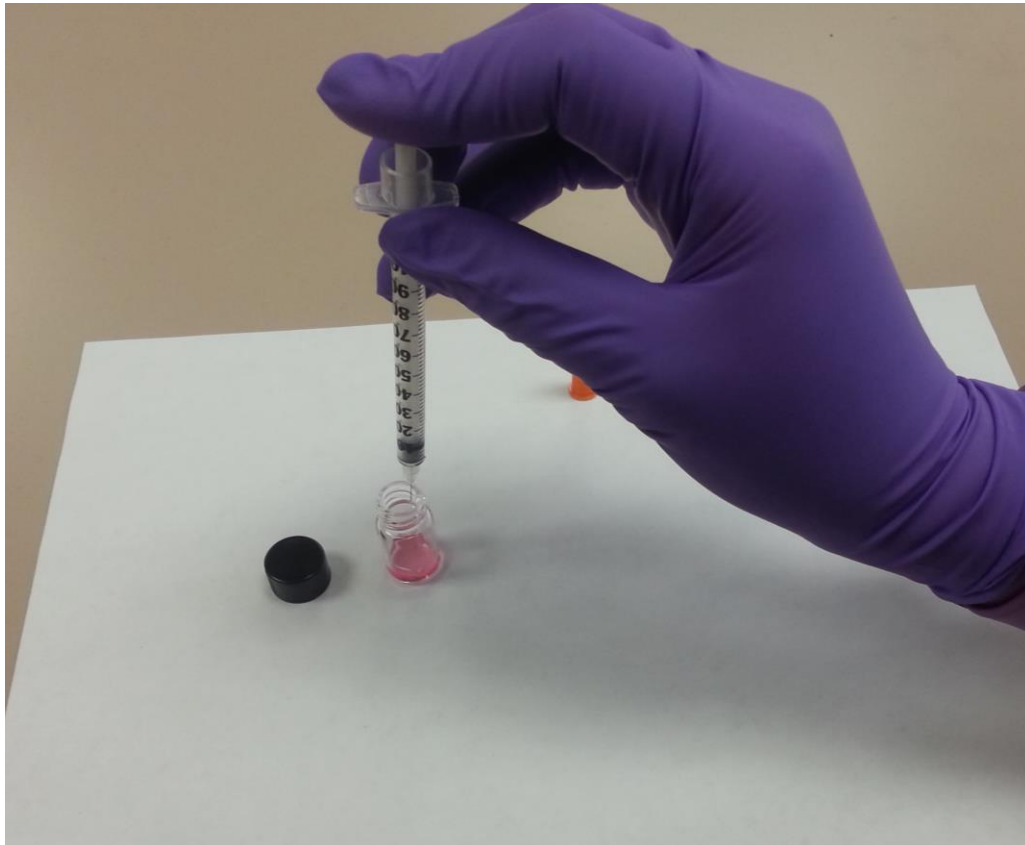
- Collect your syringe
- Collect a clean sealable container
- Remove the cap from the vial and place back down on paper

The Procedure



- Inspect the syringe cap to ensure the needle is not poking through
- Carefully remove the cap of the syringe by pulling from the tip only
- Avoid bending or hitting the needle with the cap or your hands

The Procedure



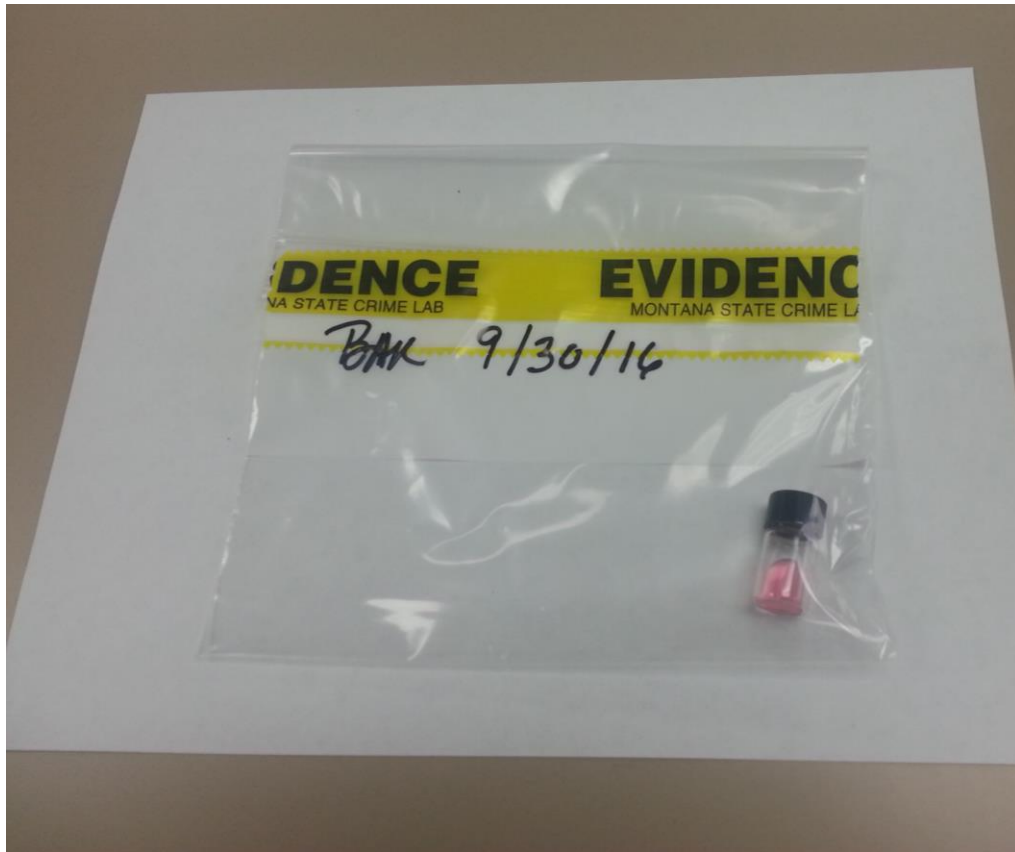
- Place opened vial on the counter. Do not hold the vial in your hand.
- Position the syringe tip inside the vial.
- Push down on the plunger of the syringe until all contents are in the vial.
- Remove the syringe tip from the vial

Recapping The Syringe



- Place the cap on the counter
- Place the needle into the cap
- Press down and set aside

The Procedure



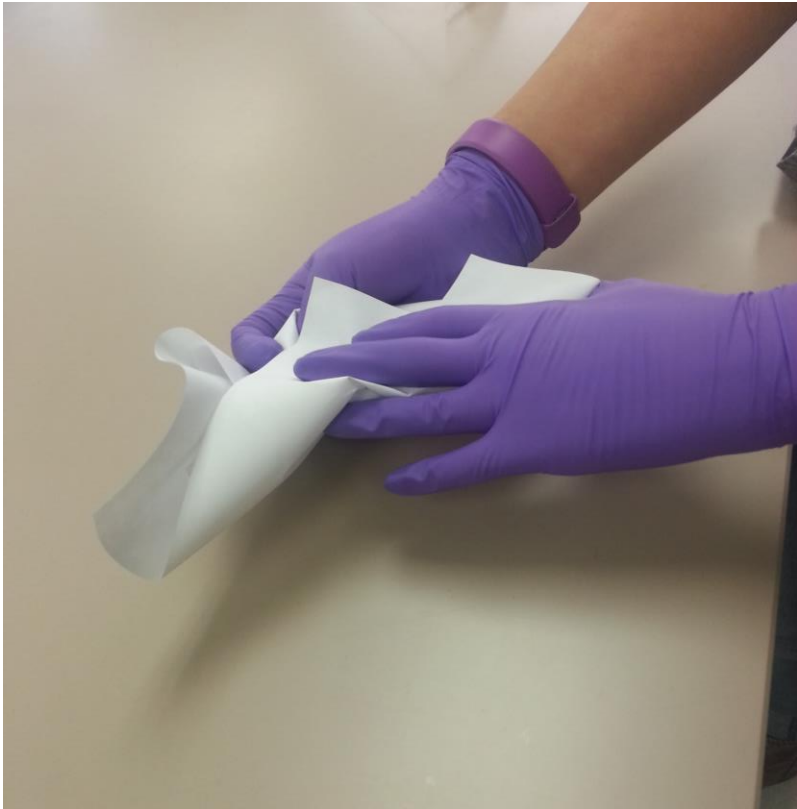
- Place lid back on vial and tighten
- Place vial in evidence bag
- Seal and label for submission

The Procedure



- Place the empty syringe into an appropriate container
- Seal with 'Evidence' tape, date and initial
- Do not send syringe to the lab

Cleanup



- Throw away the paper you worked on
- Clean the area again

Ordering Information

- ▶ Fisher Scientific
 - ▶ 800-766-7000
 - ▶ <https://www.fishersci.com/us/en/home.html>
- ▶ VWR
 - ▶ 1-800-932-5000
 - ▶ <https://us.vwr.com/store/>
- ▶ Blood collection tubes (red top only)
- ▶ Twist cap vials
- ▶ Gloves

